

HOBLink VPN

Version 1.8

for Windows

Edition: December 2009



HOBLink VPN - the VPN Solution for More Security and Greater Flexibility.

More Security for Enterprises

With HOBLink VPN enterprises can increase the security of their communications over the Internet and, at the same time, greatly reduce the cost of their remote connections. The main components IPsec VPN, integrated Security Policy, NAT and strong authentication provide you with a secure connection for all remote locations and clients to your central network infrastructure.

Product Characteristics

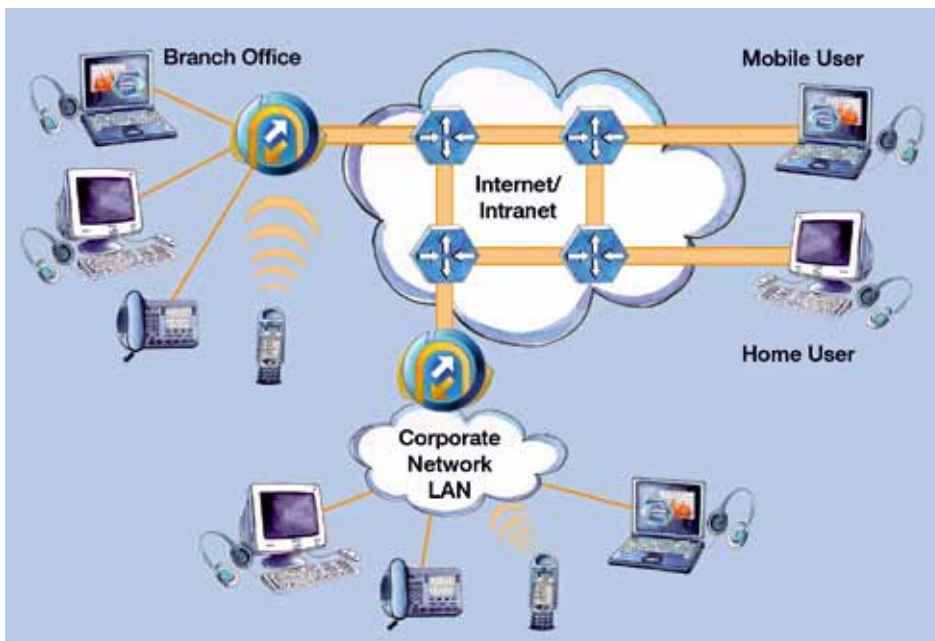
HOBLink VPN provides you with:

- A comprehensive VPN Gateway and Universal Client solution.
- A security policy implementation for protection of your private network against attacks from the Internet.
- Protection for all of the data communication in your enterprise in acc. w. the IPsec and IKE/ISAKMP (RFC 2401-ff) standards, which enable strong encryption and authentication.
- Comprehensive support of certifi-

cates and digital signatures with the integrated Certificate Manager, Smartcard and PKI

- User authentication with Radius (e.g., RSA ACE-Server)
- Smartcard authentication, TeleSec
- NAT – Network Address Translation, translates source and target IP addresses, and protects local addresses.
- NAT-T (Traversal) / UDP encapsulation: IPsec over any router, Firewalls and WLAN hotspots.
- Statefull Session Table Firewall
- Central configuration, administration and management with HOBLink Enterprise Access incl. LDAP support
- Roaming – operation without fixed IP addresses (ISDN, DSL, Wireless, GPRS, UMTS, analog, and more)
- A pure software solution, thereby providing the utmost scalability.
- Network Connection manager – automatically uses active connections to establish an IPsec tunnel.

Sample scenario for HOBLink VPN



HOBLink VPN



HOBLink VPN Specifications	
Employed VPN protocol	<ul style="list-style-type: none"> • IPsec (AH and ESP in tunnel mode)
Compression	<ul style="list-style-type: none"> • DEFLATE • V.42bis
Encryption	<ul style="list-style-type: none"> • AES (128/192/256) • 3DES • RC4 • BLOWFISH • CAST • DES • DES_IV32 • DES_IV64
Authentication	<ul style="list-style-type: none"> • HMAC_MD5 • HMAC_SHA1
IPsec parameters	<ul style="list-style-type: none"> • Replay Detection • PFS • SA Lifetime • Dead Peer Detection
IKE Modi Phase1	<ul style="list-style-type: none"> • Main Mode • Aggressive Mode • Hybrid Aggressive Mode (XAUTH)
IKE Mode Phase 2	<ul style="list-style-type: none"> • Quick Mode
IKE encryption	<ul style="list-style-type: none"> • AES (128/192/256) • 3DES • BLOWFISH • CAST • DES
IKE Hash functions	<ul style="list-style-type: none"> • MD5 • SHA1
IKE identification	<ul style="list-style-type: none"> • IP address • DN (HOBLink Enterprise Access Full Qualified Distinguished Gateway Object Name)
IKE authentication	<ul style="list-style-type: none"> • Symmetric: Preshared secret, DSA certificate, RSA certificate • Asymmetric: DSA + user/password (hybrid XAUTH) • Smartcard support (Microsoft Crypto Store) • Verification of user certificate • User authentication with RADIUS (e.g., RSA ACE) • Smartcard authentication, TeleSec • Preshared Keys locally configurable
IKE Diffie-Hellman-Groups	<ul style="list-style-type: none"> • 768 - 8192-bit MODP
IKE parameters	<ul style="list-style-type: none"> • SA Lifetime • Timeout • Retries
VPN devices	<ul style="list-style-type: none"> • Gateway • Client
Configuration	<ul style="list-style-type: none"> • Local • Via HOB Enterprise Access • LDAP
Administration	<ul style="list-style-type: none"> • LogView (local or remote) • Remote management • Alerts (e-mail)

HOBLink VPN Specifications	
Secure administration	<ul style="list-style-type: none"> • SSL encryption for administration
Basic functions	<ul style="list-style-type: none"> • Security policy • NAT • Startup rules for security during the startup phase • Intra DNS
Security Policy	Statefull Session Table Firewall, packet filter: <ul style="list-style-type: none"> • IP addresses • Service • Protocol • Session
Startup Security Policy	<ul style="list-style-type: none"> • Active immediately after system start, otherwise just like Security Policy
Split tunneling	<ul style="list-style-type: none"> • Configurable via Security Policy
NAT (Network Address Translation)	<ul style="list-style-type: none"> • Static • Dynamic • Twice NAT (source and target IP translated)
NAT (Network Address Translation - Traversal)	<ul style="list-style-type: none"> • UDP encapsulation (any VPN connection over NAT devices) • UDP keep alive
ALG (Application Level Gateway)	<ul style="list-style-type: none"> • For FTP
Dial-up connection	<ul style="list-style-type: none"> • Automatic connect and disconnect • Manual • On demand
Connection (general)	<ul style="list-style-type: none"> • User-specific automatic start of the launcher • Launcher with parameterizable startup options (connection groups)
Client	<ul style="list-style-type: none"> • Optional virtual adapter
Installation	Main installation: <ul style="list-style-type: none"> • VPN software • HOB Enterprise Access Server • HOB Enterprise Access Admin • Single SignOn (Windows XP only)
Documentation (German and English)	<ul style="list-style-type: none"> • Administration Guide in PDF format • Online help

System Requirements	
PC hardware	<ul style="list-style-type: none"> • Standard PC server, rec. HP, Dell, IBM • x86, AMD64 or IPF (Itanium) processor • Min. 500 MHz • Min. 128 MB RAM • CD drive • At least 200 MB free memory
PC operating system	<ul style="list-style-type: none"> • Windows XP/Home • Windows Server 2003 • Windows Vista • Windows Server 2008 • Windows 7 • Windows Server 2008 R2
Network interface	<ul style="list-style-type: none"> • LAN/WAN adapter
Compatibility	<ul style="list-style-type: none"> • Cisco • Checkpoint • Microsoft
Network	LAN adapter <ul style="list-style-type: none"> • 10/100 Mbps Ethernet • GbE • Wireless (WiFi) • and more WAN <ul style="list-style-type: none"> • ISDN BRI • 10/100 Mbps Ethernet (DSL) • Analog • GPRS/UMTS • and more

HOB GmbH & Co. KG
Schwademuehlstr. 3
90556 Cadolzburg

Phone +49 9103 715 0
Telefax +49 9103 715 271
E-mail marketing@hobsoft.com
support@hobsoft.com
Phone hotline +49 9103 715 161
Fax hotline +49 9103 715 299

Branch offices abroad: Malta, New York, Paris, Vienna

Visit us at our World Wide Web site:
<http://www.hobsoft.com>

Information in this document is subject to change without notice. Product information is from December 2009
Any trademarks in this document are the property of their owners.

