

# HOBLink VPN

Version 1.6  
for Windows



HOBLink VPN - the VPN Solution for  
More Security and Greater Flexibility

## More Security for Enterprises

With HOBLink VPN, enterprises can increase the security of their communications over the Internet and, at the same time, greatly reduce the cost of their remote connections. The main components IPSec VPN, integrated security policy, NAT and strong authentication provide you with a secure connection for all remote locations and clients to your central network infrastructure.

## Product Characteristics

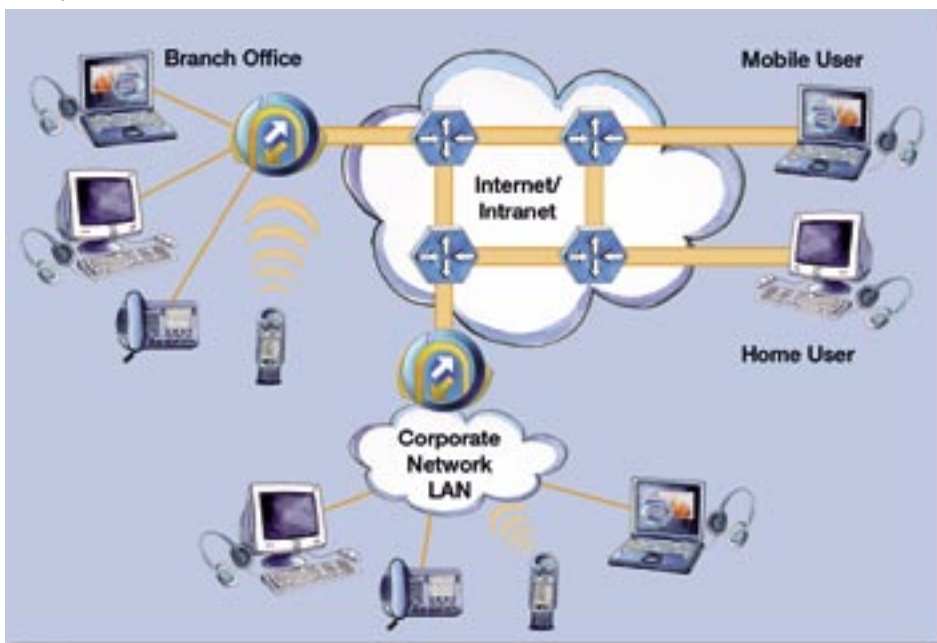
HOBLink VPN provides you with:

- A comprehensive VPN Gateway and universal client solution.
- A security policy implementation for protection of your private network against attacks from the Internet.
- Protection for all of the data communication in your enterprise in acc. w. the IPSec and IKE/ISAKMP (RFC 2401-ff) standards, which enable strong encryption and authentication.
- Comprehensive support of certificates and digital signatures with

the integrated Certificate Manager, Smartcard and PKI.

- User authentication with Radius (e.g. RSA ACE-Server)
- Smartcard authentication, TeleSec
- NAT (Network Address Translation), translates source and target IP addresses, and protects local addresses.
- NAT-T (Traversal) / UDP Encapsulation. IPSec over any router, firewalls and WLAN hotspots.
- Stateful Session Table Firewall
- Central configuration, administration and management with HOBLink Enterprise Access, incl. LDAP support.
- Roaming – operation without fixed IP addresses (ISDN, DSL, Wireless, GPRS, UMTS, analog, and more).
- A pure software solution, thus providing the utmost scalability.

Sample scenario for HOBLink VPN



# HOBLink VPN



HOBLink VPN Specifications	
Employed VPN protocol	<ul style="list-style-type: none"> <li>• IPSec (AH and ESP in tunnel mode)</li> </ul>
Compression	<ul style="list-style-type: none"> <li>• DEFLATE</li> <li>• V.42bis</li> </ul>
Encryption	<ul style="list-style-type: none"> <li>• AES (128/192/256)</li> <li>• 3DES</li> <li>• RC4</li> <li>• BLOWFISH</li> <li>• CAST</li> <li>• DES</li> <li>• DES_IV32</li> <li>• DES_IV64</li> </ul>
Authentication	<ul style="list-style-type: none"> <li>• HMAC_MD5</li> <li>• HMAC_SHA1</li> </ul>
IPSec parameters	<ul style="list-style-type: none"> <li>• Replay detection</li> <li>• PFS</li> <li>• SA lifetime</li> <li>• Dead Peer Detection</li> </ul>
IKE Modi phase 1	<ul style="list-style-type: none"> <li>• Main mode</li> <li>• Aggressive mode</li> <li>• Hybrid Aggressive mode (XAUTH)</li> </ul>
IKE Mode phase 2	<ul style="list-style-type: none"> <li>• Quick mode</li> </ul>
IKE encryption	<ul style="list-style-type: none"> <li>• AES (128/192/256)</li> <li>• 3DES</li> <li>• BLOWFISH</li> <li>• CAST</li> <li>• DES</li> </ul>
IKE hash functions	<ul style="list-style-type: none"> <li>• MD5</li> <li>• SHA1</li> </ul>
IKE identification	<ul style="list-style-type: none"> <li>• IP address</li> <li>• DN (HOB Enterprise Access Full Qualified Distinguished Gateway Object Name)</li> </ul>
IKE authentication	<ul style="list-style-type: none"> <li>• Symmetric: Preshared secret, DSA certificate, RSA certificate</li> <li>• Asymmetric: DSA + user/password (hybrid XAUTH)</li> <li>• SmartCard Support (Microsoft Crypto Store)</li> <li>• Verification of user certificate</li> <li>• User authentication with Radius (e.g. RSA ACE)</li> <li>• Smartcard authentication, TeleSec</li> <li>• Preshared keys locally configurable</li> </ul>
IKE Diffie-Hellman-groups	<ul style="list-style-type: none"> <li>• 768 - 8192-bit MODP</li> </ul>
IKE parameters	<ul style="list-style-type: none"> <li>• SA lifetime</li> <li>• Timeout</li> <li>• Retries</li> </ul>
VPN devices	<ul style="list-style-type: none"> <li>• Gateway</li> <li>• Client</li> </ul>
Configuration	<ul style="list-style-type: none"> <li>• Local</li> <li>• Via HOB Enterprise Access</li> </ul>
Administration	<ul style="list-style-type: none"> <li>• LogView (local or remote)</li> <li>• Remote Management</li> <li>• Alerts (e-mail)</li> </ul>

HOBLink VPN - Specifications	
Secure administration	<ul style="list-style-type: none"> <li>• SSL encryption for administration</li> </ul>
Basic functions	<ul style="list-style-type: none"> <li>• Security policy</li> <li>• NAT</li> <li>• Startup rules for security during the startup phase</li> <li>• Intra DNS</li> </ul>
Security Policy	<b>Stateful Session Table Firewall, packet filter:</b> <ul style="list-style-type: none"> <li>• IP addresses</li> <li>• Service</li> <li>• Protocol</li> <li>• Session</li> </ul>
Startup Security Policy	<ul style="list-style-type: none"> <li>• Active immediately after system start, apart from that like Security Policy</li> </ul>
Split tunneling	<ul style="list-style-type: none"> <li>• Configurable via security policy</li> </ul>
NAT (Network Address Translation)	<ul style="list-style-type: none"> <li>• Static</li> <li>• Dynamic</li> <li>• Twice NAT (source and target IP translated)</li> </ul>
NAT (Network Address Translation - Traversal)	<ul style="list-style-type: none"> <li>• UDP encapsulation (any VPN connection over NAT devices)</li> <li>• UDP Keep alive</li> </ul>
ALG (Application Level Gateway)	<ul style="list-style-type: none"> <li>• For FTP</li> </ul>
Dial-up connection	<ul style="list-style-type: none"> <li>• Automatic connect and disconnect</li> <li>• Manual</li> <li>• On Demand</li> </ul>
Connection (general)	<ul style="list-style-type: none"> <li>• User-specific automatic start of the launcher</li> <li>• Launcher with parameterizable startup options</li> </ul>
Installation	<b>Main installation:</b> <ul style="list-style-type: none"> <li>• VPN software</li> <li>• HOB Enterprise Access Server</li> <li>• HOB Enterprise Access Administration</li> </ul> <b>PlugIn:</b> <p>Additions to the Administration functions, in the event HOB Enterprise Access had already been installed:</p> <ul style="list-style-type: none"> <li>• HOBLink VPN Configuration</li> <li>• HOBLink VPN LogView</li> <li>• HOBLink VPN Remote Management</li> </ul> <b>Security Manager:</b> <ul style="list-style-type: none"> <li>• HOB Security Manager for the creation of SSL and VPN certificates</li> </ul> <b>Single SignOn</b>
Documentation (German and English)	<ul style="list-style-type: none"> <li>• Administration Guide in PDF format</li> <li>• Online help</li> </ul>

System Requirements	
PC hardware	<ul style="list-style-type: none"> <li>• Standard PC Server, recommended: HP, Dell, IBM</li> <li>• At least 500 MHz</li> <li>• At least 128 MB RAM</li> <li>• CD drive</li> <li>• At least 200 MB free memory</li> </ul>
PC operating system	<ul style="list-style-type: none"> <li>• Windows 2000</li> <li>• Windows XP/Home</li> <li>• Windows Server 2003</li> </ul>
Network interface	<ul style="list-style-type: none"> <li>• LAN/WAN adapter</li> </ul>
Compatibility	<ul style="list-style-type: none"> <li>• Cisco</li> <li>• Checkpoint</li> <li>• Microsoft</li> </ul>
Network	<b>LAN-Adapter</b> <ul style="list-style-type: none"> <li>• 10/100 Mbps Ethernet</li> <li>• GbE</li> <li>• TokenRing</li> <li>• Wireless (WiFi)</li> <li>• and more</li> </ul> <b>WAN</b> <ul style="list-style-type: none"> <li>• ISDN BRI</li> <li>• 10/100 Mbps Ethernet (DSL)</li> <li>• Analog</li> <li>• GPRS/UMTS</li> <li>• and more</li> </ul>

HOB GmbH & Co. KG  
Schwadmuehlstr. 3  
90556 Cadolzburg

Phone +49 9103 715 0  
Fax +49 9103 715 271  
E-mail [marketing@hob.de](mailto:marketing@hob.de)  
[support@hob.de](mailto:support@hob.de)  
Phone hotline +49 9103 715 161  
Fax hotline +49 9103 715 299

Branch offices abroad  
Eindhoven, Malta, Minneapolis,  
New York, Paris, Vienna

Visit us at our World Wide Web site:  
<http://www.hobsoft.com>

Information in this document is subject to change without notice. HOB is not liable for any omissions or errors which may be contained in this document. Product information contained herein is from December 2007

Any trademarks in this document are the property of their owners

