

# HOBLink J-Term

Product

Information

HOBLink J-Term

Web-to-Host

Entry

Connectivity Software

Version 1.2

## HOBLink J-Term Entry, the flexible Java Solution for Connectivity via the Internet

### Connectivity via the Internet: Emulation as a Java Solution

Have you been looking for a really flexible connectivity solution? Well, now you've found it! HOBLink J-Term Entry gives you a variety of emulations for server-based computing in any area of your your enterprise. The following terminals can be emulated by HOBLink J-Term:

- ✓ 3270
- ✓ 5250
- ✓ VT52 to VT525
- ✓ HP700
- ✓ SINIX 97801
- ✓ **Optionally, the J-Term Entry WTS Edition:**

This RDP/ICA client lets you access any applications running on MS Windows Terminal Server or Citrix MetaFrame



HOBLink J-Term Entry runs on any computer with a "Java Virtual Machine", from a PC with Web browser to a network client - even a handheld PC.

HOBLink J-Term Entry was one of the first emulations to be certified as "100 % pure Java".

### Platform Independence with Java

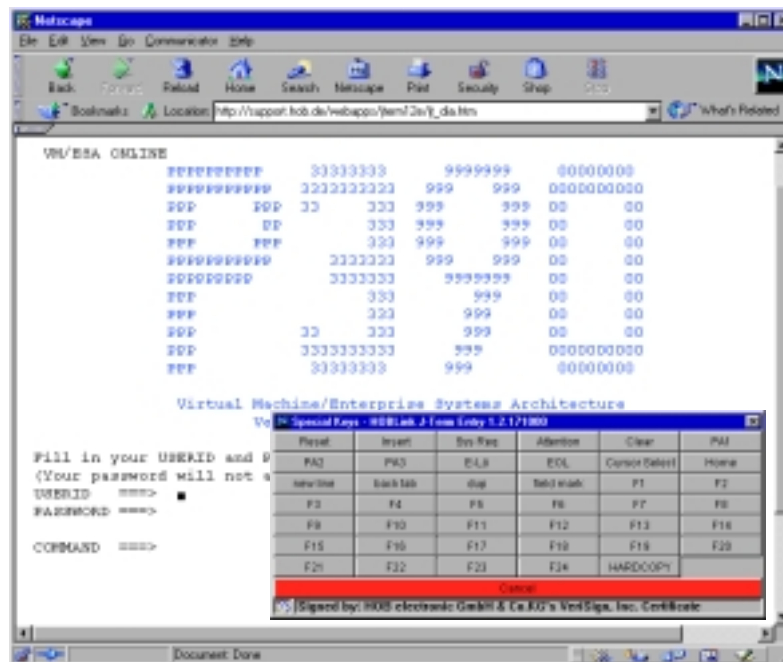
The major advantage of HOBLink J-Term Entry is that it's completely written in native Java, and as a result, it will run on just about any platform. And Java-enabled browsers are available from Netscape and Microsoft for virtually all the important platforms, including Windows 3.1x, Windows 95/98/NT/2000, OS/2, AIX, Linux, Epc, SunOS and Macintosh.

HOBLink J-Term can run on a PC that has a Java Runtime In-

terpreter installed as well as on a network client (thin client). No matter what environment HOBLink J-Term is running in, it always offers the same terminal functionality.

### Centralized Installation and Management = Reduced Costs

When it's installed centrally on the Web server, HOBLink J-Term minimizes the time and thereby the costs required to deploy and manage terminal emulations on clients. It let's you handle all configuration, software deployment and version upgrades quickly and efficiently from your headquarters.



# HOBLink J-Term

The Functions. No Gaps.

## Server or Local Installation

One installation option for HOBLink J-Term is as an applet on a Web server - e.g., on a Windows NT Server. In this case, the program is loaded and run by the browser as a Java applet. You can also install HOBLink J-Term locally, provided that a Java run-time module (Java Virtual Machine) is installed on the client.

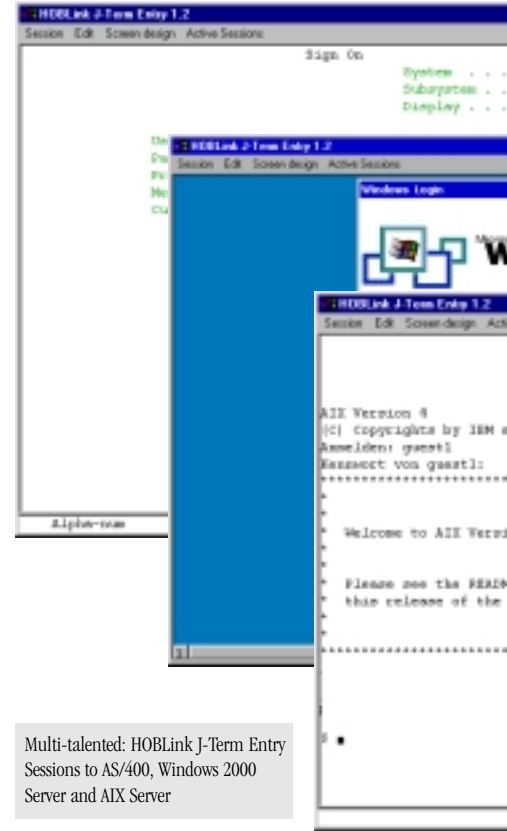
## The Host as a Web Server or Connection via an Additional Web-Server

If the Web server program is running on the host that is also controlling the terminals, then a connection can be made without the participation of any additional servers. Under JDK 1.0x, however, if the Web server program is running on a third computer, then a

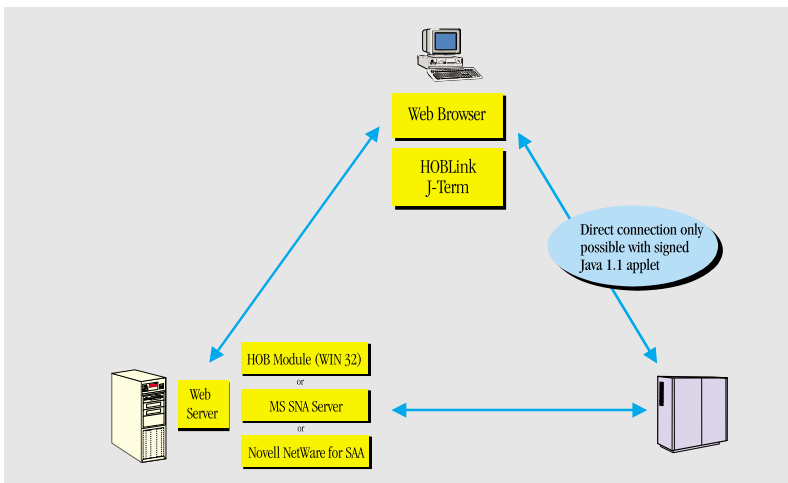
direct connection between the client and the host is not possible. In this case, the security functions of the browser only allow connections to the server that provided the Web page containing the linked Java applet. In such a case, an additional module is required that establishes the connection (see below, diagram on left).

## JDK 1.1 Support Provides Direct Connection and Printing

In compliance with JDK 1.1 our HOBLink J-Term applet is digitally signed with a certificate issued by VeriSign Object Signing CA. This signature proves that the applet you loaded on your client was actually programmed by HOB. Thus, the applet has additional privileges, e.g. reading/writing files,



establishing direct network connections to the host and printing from within the browser. With our signed applet you can print from host applications (hardcopy and host system print) on any printer connected to your client desktop, locally or via network. (System printing requires HOB.COM.)



HOBLink J-Term as a Java applet for downloading from the Web Server.  
 Java 1.0x: Data exchange between the Web server and Host via the HOB module (IBIPGW02).  
 Java 1.1: Data exchange directly between client and host is possible.



# Working with it. Simple.



## Easy-to-Use

Users don't have to worry about the technical details of connecting to the host applications. To set up easy host access for the entire enterprise, Web administrators can create HTML pages with hyperlinks that connect to specific host applications. These Web pages can be set up for internal as well as for external users, such as mobile users, field workers, customers and suppliers.

To start an emulation session, users just click on the predefined Web links that automatically connect to the host applications. Accessing host systems is as easy as surfing the Web, a skill most users already have. No additional training is needed and your users can get to work immediately.

## Data Security and Cost Savings with Encryption and Compression

With HOBLink J-Term Entry, you can compress the entire 3270 data stream, thus saving line costs and speeding up communication. Data encryption is also possible (64-bit block cipher with 256-bit key length) - an absolute necessity for confidential data sent over the internet. The HOBCOM host integration and optimization software for /370 and /390 mainframes, is a prerequisite for HOBLink J-Term encryption and data compression.

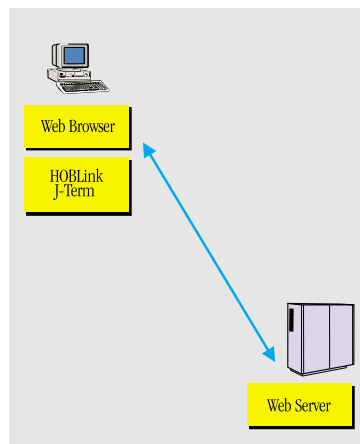
## The WTS Edition - Windows Anywhere

In addition to the traditional emulations, the WTS Edition of HOBLink J-Term Entry also gives any client low-cost access to MS Windows NT4 Servers and Windows 2000 Servers via the RDP or ICA protocols. With this special package, you can work with the entire range of Windows applications running on the Windows Terminal Server, taking advantage of such features as:

- ✓ Local and network printing
- ✓ Application Serving (direct, connection to a specific application)
- ✓ Session shadowing (monitoring other client sessions, Windows 2000 only)
- ✓ Standard support for WTS encryption (up to 128-bit) and SSL (optionally with HOBLink Secure)

## Top Performance

HOBLink J-Term offers the highest performance even with many client connections. The Java applets for HOBLink J-Term amount to less than 150KB, keeping download time to clients to a minimum. The code is divided into modules, and only those modules are downloaded that deliver the specific functionality the user requires.



Web server as Host application. Direct connection between the browser and the host.

# Compressed:

HOBLink J-Term. Concise and to the point.

Give us a try!

Download your free  
evaluation copy today:

[www.hob.de/worldwide](http://www.hob.de/worldwide)

## Advantages at a Glance

- ✓ Access to IBM mainframes, AS/400, ASCII hosts, SINIX RM400/RM600, HP3000, HP9000 and Windows Terminal Servers
- ✓ Executable with any Java-enabled Web browser
- ✓ Hardcopy and host system print from host applications on locally installed or network printers
- ✓ Server-based installation instead of installation on every desktop
- ✓ Security using encryption (up to 128-bit) via HOB "Y2" protocol (64-bit block cipher with 256-bit maximum key length) or SSL (when HOBLink Secure is used in addition)
- ✓ High performance and low line costs: lean applets and compression of 3270 data
- ✓ Authentication of Web server and host system can be used

## Code Pages

HOBLink J-Term is available in five different international versions, each of which supports the corresponding code pages on the host:

- ✓ Austrian/German (697/273)
- ✓ Swiss-German (697/297)
- ✓ English US (697/037)
- ✓ English UK (697/285)
- ✓ French (697/297)

## System Requirements

### Client System

On the client side any Java-enabled Web browser can be used, e.g.

- ✓ Microsoft Internet Explorer 3.0.2 (or later)
- ✓ Netscape Navigator 3.0.1 (or later)
- ✓ Netscape Communicator 4.0 (or later)

HOBLink J-Term's signed Java 1.1 applet requires a browser with full JDK 1.1 support:

- ✓ Netscape Communicator 4.5
- ✓ Microsoft Internet Explorer 4.0

## Web Server

HOBLink J-Term can be installed on any common Web server, e.g. under Windows NT 4.0:

- ✓ Microsoft Internet Information Server 3.x or 4.x
- ✓ Netscape Enterprise Server 3.x

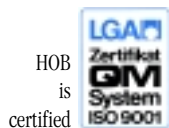
## Worldwide Availability

With HOBLink J-Term, you can connect to your host using any Java-enabled computer with an Internet connection - worldwide! No additional software has to be installed; the only entry you need to make is the Web address (URL) of the Web page that contains HOBLink J-Term.

## Test It now in the World Wide Web

You can have a first-hand look at HOBLink J-Term any time you like and test it in the process with no local installation. Just visit the following page at our Web site:

<http://www.hob.de/worldwide>  
- and go to our "Online Test Center".



HOB  
is  
certified



Visit us at our  
World Wide Web site:  
<http://www.hob.de/worldwide>

Information in this document may be subject to change without notice. HOB is not liable for any omissions or errors which may be contained in this document. Product information contained herein is from January 2001. Any trademarks mentioned in this document are the property of their owners.

HOB GmbH & Co. KG  
Headquarters:  
Brandstaetterstr. 2-10  
D-90513 Zirndorf  
Germany  
E-mail: [marketing@hob.de](mailto:marketing@hob.de)  
Phone +49-911-96 66-393  
Fax +49-911-96 66-271

HOB international:  
New York, Eindhoven, Malta,  
Moscow, Paris, Vienna