

# HOBLink JWT

Version 3.2

HOBLink JWT - Platform-Independent Access  
to Windows Applications



## Windows Terminal Server Computing

Access applications centrally installed on Windows Terminal Servers (WTS) from anywhere. The RDP client from HOB gives you all the advantages of server-based computing for Windows applications. HOBLink JWT, the innovative solution for WTS access, brings you many additional benefits, improving installation, administration, operability and security.

## A Secure Investment

This platform-independent solution ensures that you can use the complete range of Windows applications on the WTS, no matter what operating system is installed on your client computer. This markedly reduces the Total Cost of Ownership, as not only all the applications, but also HOBLink JWT can be centrally installed and configured.

## Data Security

Strong data security for communications with the WTS is provided by the optional HOBLink Secure component, which provides you with strong encryption (up to 256-bit SSL) and authentication. Further information on security matters can be found in the HOBLink Secure data sheet.

## Single-Point-of-Administration: HOB Enterprise Access

By deploying HOBLink JWT together with HOB Enterprise Access, the administrator can centrally administrate all user and configuration data. The users can be displayed in a group and tree structure, which greatly simplifies administrative tasks, especially for installations with a great many users. Via the LDAP interface, HOB Enterprise Access supports the most important directory services, for example, Novell NDS and Microsoft ADS.

## True Windows

“True Windows” allows you to completely integrate remote applications in your local desktop. The user notices no difference whatsoever between locally installed and WTS applications. Even application-specific tray icons are displayed on the client. To save resources, session sharing is supported, i.e., several WTS applications on a single server all belong to a single session. With the true Windows application manager, all applications used in the WTS farm can be displayed and, if desired, immediately terminated, just as with the Windows Task Manager.

## Bidirectional Audio

Bidirectional audio between a local machine equipped with, e.g., a Philips SpeechMike or other microphone and the WTS applications is fully supported.

## 64-Bit Windows Support

Windows Server 2003 is supported in both the x64 as well as the Itanium versions. Parallel operation of 32- and 64-bit applications on the WTS, also when using True Windows, is possible.

## Virtual Channel Support

Virtual channel support enables third party applications to communicate with the WTS over the RDP connection. Additionally, specified channels can be prioritized.

## Virus Protection

Data being copied from a local drive to the Terminal Server can be automatically inspected with a virus scanner, safeguarding against virus infections.



## Re-establishing Disconnected Sessions

Client sessions that have been disconnected, e.g., by the user or due to network problems, can be re-established. This can also be done when accessing a server farm. The user can continue working at the place where the session was disconnected.

## Flexible Print Functions - Easy Print

The flexible print functions of Universal Printer Support in HOBLink JWT offer you a wide range of printing options for printing on local or network printers.

- Local Print (printing to local or network printers via a driver on the WTS)
- Easy Print (printing to locally available printers with a local driver)
- LPR/LPD Print
- IP Print (printing to an IP port of the network printer)
- Under Windows: Automatic printer mapping

The “Easy Print” function enables you to edit print data on the WTS in PCL format and then to print them on a local or network printer. The advantage: On the WTS you no longer have to install all the printer drivers used on the client side, but only, at the most, two.

## Security

HOBLink JWT can communicate over the Internet. Comprehensive encryption techniques provide the security this type of communication demands.

## Standard WTS Encryption

- “Low” Encryption of the data from the client to the server, 40- or 56-bit, RC4.
- “Medium” Bidirectional, 40- or 56-bit, RC4
- “High” Bidirectional, 128-bit, RC4

## SSL Encryption

HOBLink Secure (optional) gives you SSL encryption with key lengths of up to 256 bits.

## Proxy Server

HOBLink JWT can detect a SOCKS or HTTP proxy configured in the system and can thus be used for communication over these proxy servers.

## Supports Tokens for Authentication

Authentication systems using so-called tokens can provide additional security. HOBLink JWT supports the systems RSA SecurID and SafeWord PremierAccess (optional, requires the HOB WebSecureProxy, a component of HOBLink Secure).

## Application Serving

This function automatically starts a specific application when logging on to a Terminal Server, so that the user is not granted access to the entire Windows desktop. The administrator can centrally, i.e., remotely, configure this function.

## Application Publishing

This optional function is used to “publish” individual applications, i.e., make them available to all users. Hereby, the individual Windows

Terminal Servers within a server farm can have different configurations.

## Enhanced Local Drive Mapping

HOBLink JWT guarantees access to local drives, e.g., CD-ROM, diskette-drives, or hard disks, through the “Enhanced Local Drive Mapping” feature. This is possible for the Windows 2000 Server and Windows Server 2003/2008.

## Load Balancing

With the “Load Balancing” component included in the scope of delivery, you can distribute the load within a server farm to all computers, so that the existing hardware is optimally used. The client sends a request to each participating Windows Terminal Server and, depending on the configuration, the client will be connected with either the first responding Windows Terminal Server, or the one with the lowest load. Alternatively, you can also have a list of all responding servers displayed for the



Microsoft Windows in a browser - with your Windows Terminal Server

client, from which the user then selects the server he or she wants. With the optional “Enhanced Load Balancing” component, the administrator can even more finely distribute the load. With this component, the administrator can define numerous criteria for measuring the load, e.g., CPU load, swap activity, memory utilization, number of active sessions, network load, etc.

## Java Web Start

HOBLink JWT Enterprise Access supports Sun’s Java Web Start technology. This means that the HOBLink JWT applet is only loaded from the Web server once, the first time it is started; in all subsequent starts it is loaded from the local cache, if no newer version is available from the Web server.

## The Most Important Features at a Glance

- Central installation on a Web server with browser as client, or local installation
- Supports Windows and



With HOBLink JWT, you quickly “surf” to

- non-Windows platforms
- Central administration via HOB Enterprise Access
- Load Balancing
- No installation on the WTS is required for communication (in the basic configuration)
- TCP/IP as transport protocol
- Supports protocols RDP 4 to RDP 6
- Flexible print functions for local and network printers
- Wheelmouse support (for non-Windows clients, a JVM 1.4 is the minimum requirement)
- Supports client connections over LAN, WAN, dial-up lines, ISDN, xDSL, VPN
- “Copy & Paste” of text between client and server
- Automatic reconnection to a disconnected session
- Application Serving direct connection to an application
- True Windows
- Automatic version control (Smart Update)
- Full screen mode
- Session Shadowing Administrator can monitor all current client sessions
- Supports Microsoft encryption with key lengths of up to 128 bits
- SmartCard redirection supports the login process on the WTS
- Clients can be pre-configured with IP addresses, server names and other connection settings
- Configurable RAM- and hard-disk-cache
- Configurable keypad
- Java Bean for integration of HOBLink JWT into Java programs
- XML-based storage of configuration data

The following features are available with the optional component “HOBLink Secure”:

- SSL-encryption, up to 256-bit key lengths, via HOBLink Secure
- Simultaneous use of SSL-encryption and Load Balancing via HOB Web-SecureProxy

The following features require other, optional components:

- Access to local drives via “Enhanced Local Drive Mapping” (in connection with Windows 2000 Server, Windows Server 2003 and/or Windows Server 2008)
- Application Publishing
- Enhanced Load Balancing

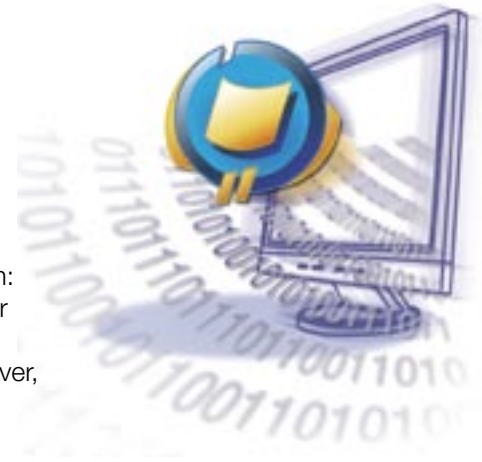
The following features are available for use with the Microsoft Windows Server 2003/2008:

- Configurable color depth: 8-, 15-, 16-, or 24-bit
- Audio support
- Local Port Mapping: local COM and LPT ports
- Local Drive Mapping of the Windows Server 2003



# HOBLink JWT

## The Facts About the Better WTS Solution



## The Advantages of HOBLink JWT

- Connection of all clients, e.g., Windows, Linux, Unix, Apple Macintosh, OS/2, Hand-held PC's, etc.
- Windows applications can be used on any platform
- No software has to be installed on the clients
- Optimum exploitation of the existing network infrastructure
- Scalable solution for central installation and administration
- Can use any type of hardware, operating system and network
- No adal server components necessary (in the basic configuration)
- Optimum use of networks with low bandwidths via compression of all communication data (MPPC protocol)
- Access to local drives via Enhanced Local Drive Mapping
- Browser-based access to Windows applications
- Flexible print functions for printing on all network printers and locally connected printers

## Keyboard Layouts

In addition to the US English keyboard support, many other keyboard formats are supported (for example, German, French, Dutch, Spanish, Portuguese, etc.)

## Available with or without HOB Enterprise Access

There are two variants of HOBLink JWT:

**HOBLink JWT Enterprise Access**  
This variant provides you with all the advantages of HOB Enterprise Access, such as central administration, and easy access to all enterprise servers.

**HOBLink JWT**

This "thin" variant is designed for customers who do not need central user administration.

## System Requirements

Windows Terminal Server

HOBLink JWT is compatible with:

- Microsoft Windows NT Server 4.0 Terminal Server Edition
- Microsoft Windows 2000 Server, Advanced Server and Data-center Server with integrated Windows Terminal Services
- Microsoft Windows Server 2003
- Microsoft Windows Server 2008
- Microsoft Windows XP Pro
- Microsoft Windows Vista

## Web Server:

HOBLink JWT can be installed on any Web server regardless of the operating system.

## Client Platforms:

HOBLink JWT supports all Java-capable platforms as of JRE 1.1. On UNIX platforms, a Sun JVM with Java 1.3 or higher should be used. A requirement for the client is that it have a JVM (Java virtual machine), these can be easily installed as plugins on all browsers (Microsoft Internet Explorer, Netscape Navigator, Mozilla Firefox, etc.). We recommend a JVM with JIT compiler (e.g., Sun Java 1.3 or higher, Microsoft JView). The following hardware equipment is recommended for the client:

- Minimum RAM 64 MB
- Minimum processor Pentium with at least 200 MHz

## Further Information:

You can find more information on the properties of the optional HOB Software products for supplementing HOBLink JWT in the following product datasheets:

- HOBLink Secure (incl. HOB WebSecureProxy)
- HOB Enterprise Access
- HOB RD VPN

HOB GmbH & Co. KG  
Schwadmuehlstr. 3  
90556 Cadolzburg

Phone +49 9103 715 0  
Telefax +49 9103 715 271  
E-mail [marketing@hobsoft.com](mailto:marketing@hobsoft.com)  
[support@hobsoft.com](mailto:support@hobsoft.com)  
Phone hotline +49 9103 715 161  
Fax hotline +49 9103 715 299

Branch offices abroad  
Eindhoven, Malta, New York, Paris, Vienna

Visit us at our World Wide Web site:  
<http://www.hobsoft.com>

Information in this document is subject to change without notice. HOB is not liable for any omissions or errors which may be contained in this document. Product information contained herein is from October 2007  
Any trademarks in this document are the property of their owners.

