



# **HOBLink J-Term**

## **Eclipse Plug-in**

HOB GmbH & Co. KG  
Schwadmühlstraße 3  
90556 Cadolzburg  
Deutschland

E-Mail: [support@hobsoft.com](mailto:support@hobsoft.com)  
Internet: [www.hobsoft.com](http://www.hobsoft.com)

## 1. Overview: Eclipse and HOBLink J-Term

Eclipse is a framework for the development of almost any type of software. It is most popularly used as an Integrated Development Environment (IDE) for the programming language Java. Due to its open, plug-in based structure, Eclipse is now being used for a wide variety of development tasks.

HOB'S **J-Term Eclipse Plug-in** allows HOBLink J-Term to also be used with Eclipse. HOBLink J-Term is a powerful software solution for efficient and economical connection of all client platforms to centralized data and applications.

HOBLink J-Term provides you with user-friendly terminal emulations for 3270, 5250, VT-, HP700, SINIX 97801 und 9750 terminals.

## 2. Installation

The **J-Term Eclipse Plug-in** is delivered in the form of a file compressed in ZIP-format.

To execute the plug-in, Eclipse (as of version 3.2) must be installed on the computer.

To install the software, you only have to decompress it with a conventional compression program (e.g., 7-Zip or WinZip) and copy the content into the Eclipse plug-in folder, e.g.,

```
C:\eclipse\plugins
```

Please observe that the directory structure is retained during decompression. The following sub-directory is created in the plug-in folder:

```
C:\eclipse\plugins\de.hob.jterm_1.0.0
```

### 3. Installing the Online Help

The online help for the **J-Term Eclipse Plug-in** is delivered as a zip file: **JTermEclipsePluginHelp.zip**. The online help can be installed separately. This can be done in one of two ways:

1. **Local installation**

Here the files are extracted from the file **JTermEclipsePluginHelp.zip** into the directory `\www\help` within the installation directory, e.g., into `C:\eclipse\plugins\de.hob.jterm_1.0.0\www\help`

2. **Installation on a Web server**

The online help can be copied to a Web server of your choice. In this case the source code of the class **HOBView** (file `HOBView.java`) will have to be modified.

To do this, in the function **createPartControl** change the line `HobContext.setFeature(K.FEATURE_HELPSEVER, "http://hobrd.hob.de/EA2/");` by replacing the URL (`http://hobrd.hob.de./EA2/`) with the URL of the desired server. Then copy the files from the zip file **JTermEclipsePluginHelp.zip** into the directory `/www/help` to the Web server within this URL.

### 4. Pre-configuration of Sessions by the Administrator

The administrator can pre-configure two sessions for the user.

To pre-configure sessions for the user, the administrator starts the file `jterm.exe`:

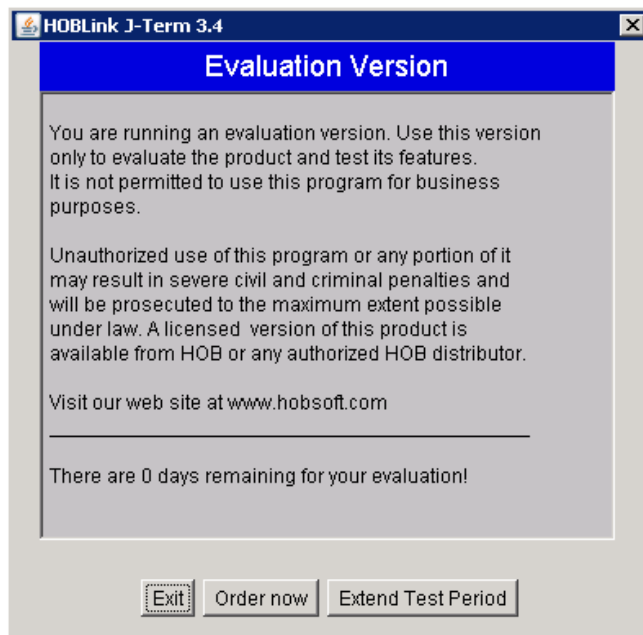
```
C:\eclipse\plugins\de.hob.jterm_1.0.0\jterm.exe
```

**Please note:** To launch this exe file, the environment variable `java_home` must be set to a directory that contains the file `java.exe`.

The file `jterm.exe` starts the HOB EA Session Manager. Using this, the administrator can create two sessions to be used by the **J-Term Eclipse Plug-in**. These sessions must be labeled `HOST1` and `HOST2`.

## 5. Enter Product Key

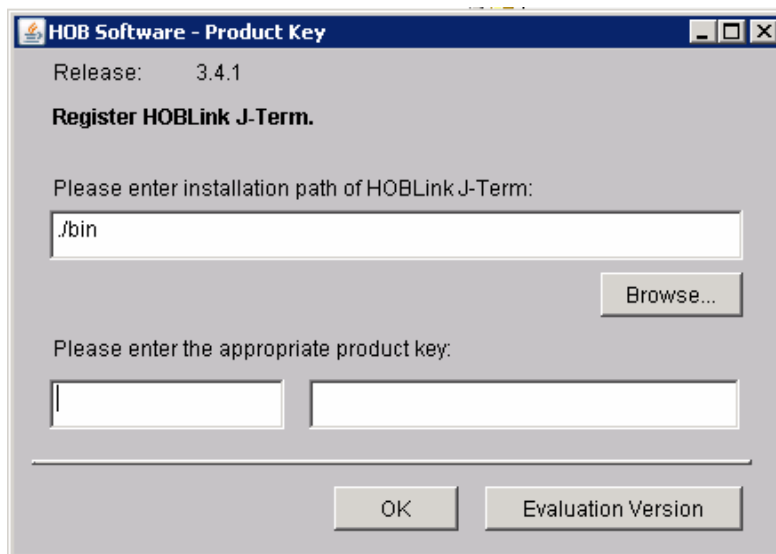
When the **J-Term Eclipse Plug-in** starts, the following message appears:



If you do not have a product key, you can only test the software for a limited time, after which the software will no longer start. If you want to continue testing after this period has expired, click the button "Extend Test Period."

If you have a full version, you have received a product key along with the software. In this case, start the program `ProductKey.exe`, which is found in the installation directory of the **J-Term Eclipse Plug-in**, e.g.,

`C:\eclipse\plugins\de.hob.jterm_1.0.0\ProductKey.exe`

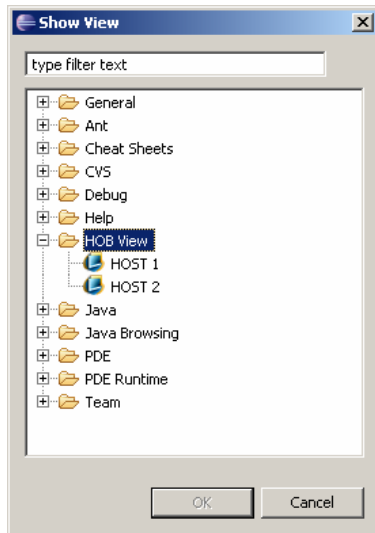


Enter here the product key as well as the installation path of the **J-Term Eclipse Plug-in**, e.g.,

`C:\eclipse\plugins\de.hob.jterm_1.0.0\`

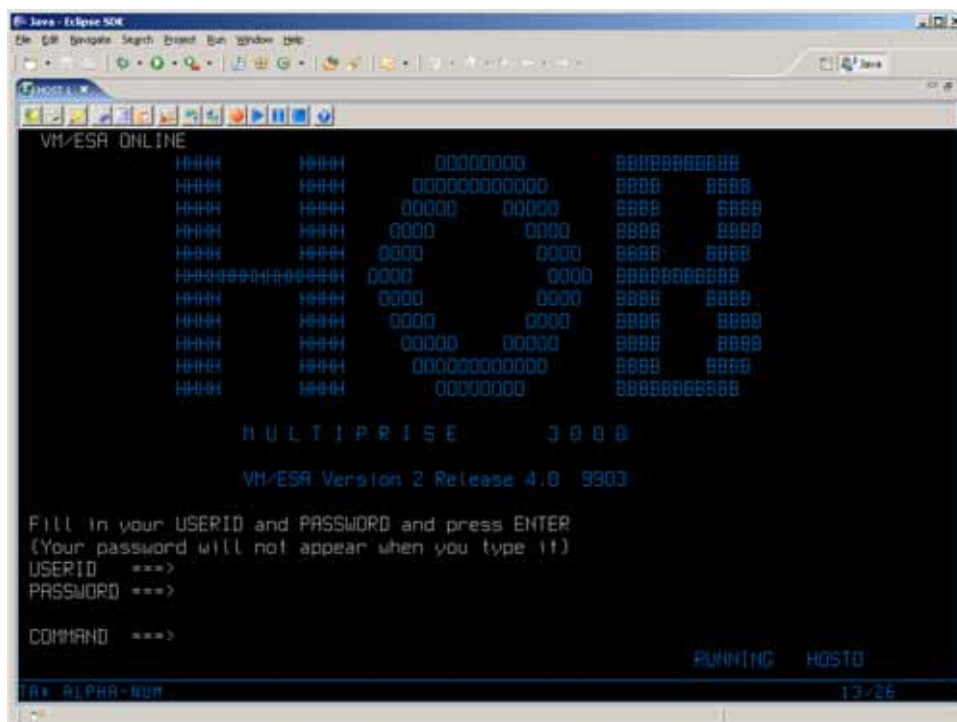
## 6. Starting the J-Term Plug-in

To display the **J-Term Eclipse Plug-in**, start Eclipse and select the menu item Windows>Show View/other...



The window "Show View" opens, displaying the installed plug-ins. The **J-Term Eclipse Plug-in** can be found under the node "HOB View."

When you open this node, the two pre-configured sessions "HOST1" and "HOST2" are displayed. To open the terminal window, double-click one of these sessions. This terminal window establishes the connection to the corresponding remote host.



## 7. Configuring Connections

The user gets the sessions pre-configured by the administrator. The HOBLink J-Term Session Editor can be used by the user to configure a session himself. To do this, click the settings symbol in the toolbar:



Information on session configuration can be found in the Session Editor online help.

Sessions created by the administrator are saved in a sub-directory of the J-Term Eclipse Plug-in, e.g.:

```
C:\eclipse\plugins\de.hob.jterm_1.0.0\configuration
```

Sessions modified by the user are saved in a folder within the user directory, e.g.:

```
C:\Documents and settings\User name\Application data\hob\ea
```

**Please note:**

The **J-Term Eclipse Plug-in** configuration files and those of **HOBLink Terminal Edition** are both saved to the same folders, i.e., if the user runs both products simultaneously, there is a risk that the settings on one will be overwritten by the other. Therefore, the user must not edit configurations on both programs at the same time.

HOB Software and Documentation 2007

Telephone: +49-9103/715-161

Fax: +49-9103/715-299

All information in this document is the property of HOB and may not be changed without prior consent. This information represents no obligation on the part of HOB.

All rights reserved. The reproduction of content, whether text, graphics or images is strictly prohibited without written prior consent from HOB.

The software and documentation has been tested and verified. HOB is however not liable for loss or damages which may arise from the use of any information, details, errors or omissions of this software or documentation. All product names used are trademarks or registered trademarks of their respective owners.