

HOBLink J-Term

Version 3.4.1



Platform-Independent Terminal Emulation

HOBLink J-Term is the modern, high-performance, secure solution for access to all important servers in your enterprise. This unique software suite enables you to efficiently and economically connect any client platform to central data and applications. Making optimum use of Java technology, HOBLink J-Term lets you perform installation and administration tasks from a single, central location. And you have virtually no installation workload with individual clients, since everything you need – Web browser with Java Virtual Machine – is already present on almost all modern computer systems.

The Web-to-Host Solution for Modern Enterprise IT

HOBLink J-Term is the Web-to-host solution that offers your enterprise more:

- User-friendly emulation of 3270, 5250, VT, HP700, SINIX 97801 and 9750 terminals
- Access to Windows Terminal Servers via RDP
- HOB Enterprise Access for central administration and configuration
- HOBLink Secure for SSL or SSH data encryption.

HOBLink J-Term is modular. That means you don't have to buy the complete package, but can combine the individual components as needed. This insures that you get a solution designed for your requirements and you don't pay for software you don't need.

Single Point of Administration with HOB Enterprise Access

With HOB Enterprise Access the administrator can centrally manage all users and configuration data. The users are represented in a group and tree structure, considerably simplifying administration, especially if there are a great many users. All user settings are bequeathed by the tree to the groups, and then from the groups to the users in each group. The result is a significant reduction in administration. HOB Enterprise Access can be used for more than just the central administration and configuration of HOBLink J-Term: it can also be used for other products in the HOB Enterprise Access family, thus assuring you access to all mission-critical data and applications in your enterprise.



Eclipse Plug-In

HOBLink J-term can also be used as an Eclipse plug-in on rich client platforms.

LDAP Directory Services Support

Since HOBLink J-Term supports the LDAP interface (LDAP v3), it lets your enterprise access the most-used directory services on the market, e.g. iPlanet Directory Service, Novell eDirectory, Microsoft Active Directory and IBM Directory Services.

All configuration data are managed centrally. Every user can access his own configuration from any workstation, which is a big plus for remote workplaces or mobile users.

Centralized Installation

Centrally installed on a Web server, HOBLink J-Term minimizes the time required to distribute and manage the terminal emulation programs - substantially reducing costs.



True Windows

“True Windows” allows you to fully integrate remote applications running on the Windows Terminal Server into your local desktop. For the user there is no more discernible difference between local and WTS Applications.

Quick Load Times via Mature Architecture & Compact Applets

HOBLink J-Term’s special architecture (patent pending) and compact Java applets allow users to work efficiently and quickly. The software package is designed on a modular basis, meaning that when a terminal emulation is selected, only the necessary Java classes are invoked and transmitted across the network. As a result, less data needs to be transmitted, substantially reducing both the loading time and the connection costs.

Express Logon

With HOB Express Logon, you are logged-on to the host automatically; this logon is authenticated via a local certificate.

HOB Single Sign-On

The user-data from the Windows logon can be taken over automatically for the host logon; no repetitious entry is necessary.

Many Integration Options

The open port selection for all communication paths, the use of HTTP proxies in concert with SSL, and the various installation models allow you

to integrate HOBLink J-Term in every network and access structure. Additionally, the JavaBean and IBM WebSphere Portlet support enable application-level integration into existing portal solutions.

Flexible Print Options

The myriad of print options available with HOBLink J-Term fulfill every conceivable requirement. You can choose from a number of different output possibilities, for example, port, file, “Easy Print,” LPD printer, IP printer and the Windows default printer.

The print option HOBLink J-Term interprets the print data that are sent in PCL format from the host. A local (client) print driver handles the print output to either a network or local printer. In this way, the print datastream from the host is not dependent on the specific printer hardware being used.

Operates Just Like HOBLink Terminal Edition

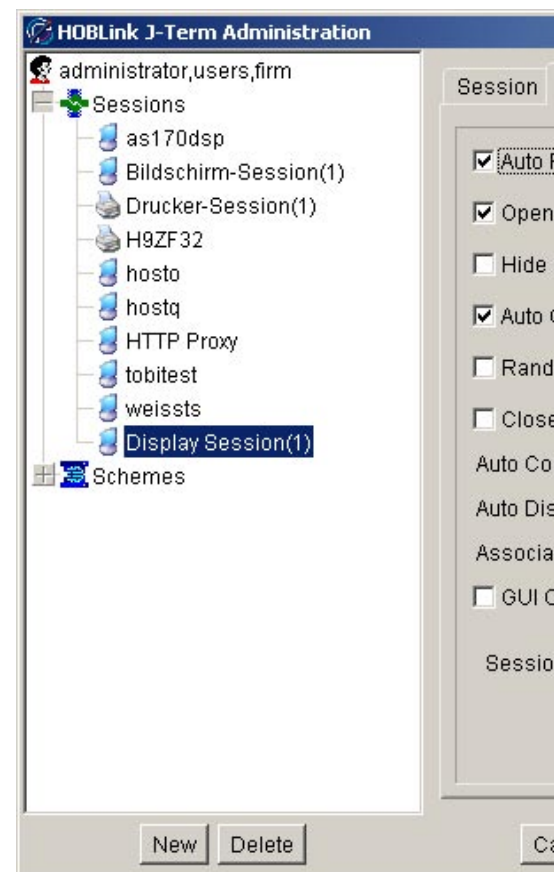
HOBLink J-Term and HOBLink Terminal Edition, the HOB native terminal emulation for Windows, are almost identical in function and product design. The advantage of this is that users who work with both versions (e.g. HOBLink Terminal Edition at the office and HOBLink J-Term on the road), as well as users who want to migrate, do not have to adjust to two different programs and require no extra training. Furthermore, both products can access the same central configuration data.

GUI’s Replace Green Screens

HOBLink J-Term can automatically turn host “green screens” into graphical user interfaces (GUI), allowing users to work more efficiently.

Encryption Ensures Data Security

Any data that HOBLink J-Term transmits over the Internet can be encrypted based on SSL, version 3, using HOBLink Secure as an add-on. The cryptographic algorithms supported include RC2, RC4, DES, 3DES and AES. In the VT emulation, SSH encryption is also available. Secure file transfers can be made over SFTP (SSH or SSL encryption). In concert with the HOB-COM host software, HOBLink



J-Term offers a second option for encrypting 3270 data. In this case, you can encrypt either the password alone, or the entire data stream, including print data .

User Friendly

HOBLink J-Term offers numerous features that provide the user with the desired level of comfort. Every user can customize the taskbar as desired. Tasks that are repeated often can be automated using the integrated macro recorder. A comprehensive online help written in HTML gives the user access to extensive information regarding the use HOBLink J-Term.

Failsafe Feature

The configuration data are locally buffered, ensuring that

a host connection can still be established even if the Enterprise Access Server is not available.

Java Web Start

HOBLink J-Term supports Sun Microsystems' Java Web Start Technology, i.e., the first time the program is called, it is saved to the hard disk, so that it need not be loaded from the server at the next start. The server will, however, be checked for a newer version, and if one is found, the program on the hard disk will be updated. Unnecessary delays caused by repetitious loading of the applet are thus avoided.

Raster Fonts

For improved screen display, HOBLink J-Term can use its

own, high-quality raster fonts, vastly improving the scalability of the terminal emulation window.

Configuration Models

HOBLink J-Term has four different configuration models: These are:

Enterprise Configuration Model

Administration is carried out centrally from the Enterprise Access Server. All user settings are stored on the server, streamlining all administrative tasks.

LDAP Configuration Model

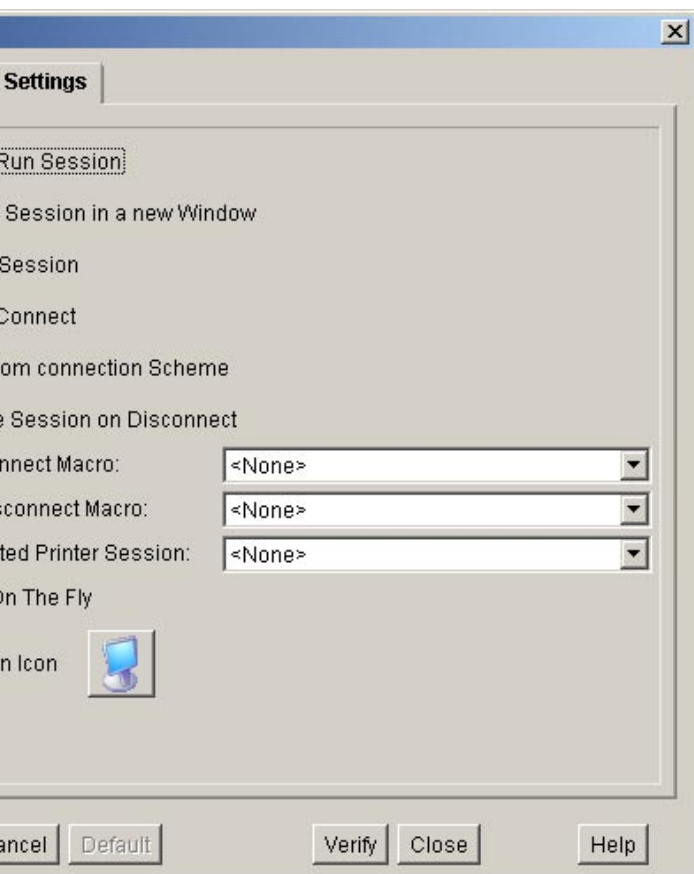
The user settings are stored centrally on an LDAP server.

WebProfile Configuration Model

The administrator creates user profiles that are stored on the Web server. When a user runs HOBLink J-Term, his WebProfile is loaded from the Web server. Settings made by the user are stored locally on the client. The advantage: configuration data are loaded over the default http port, thus no additional ports must be opened, reconfigured, etc.

Local Configuration Model

Here, the Java applets are not loaded over the Web, but the application and user settings reside on the local machine. User settings can be stored centrally in HOB Enterprise Access or locally on the client.



J-Term Administration screen, Display Session settings

HOBLink J-Term – The Better Web-to-Host Solution

Benefits at a Glance

- Access to IBM mainframes, AS/400 (iSeries), ASCII hosts, SINIX RM400/600, BS2000, HP3000/9000 and Windows Terminal Servers from one application
- Network access over the Internet, Intranet and Extranet
- Access to directory services via LDAP interface
- 100% pure Java, platform-independent
- Allows for user-defined settings
- Graphical user interface for host applications via “GUI-on-the-fly”
- Strong encryption of communication data with up to 256-bit (optional with HOBLink Secure)
- SSH encryption for VT emulations (optional with HOB Enterprise Access)
- Supports Smart Card
- Supports HTTP proxy
- HOB Single Sign-On
- Express Logon
- File transfer via IND\$FILE and Secure FTP
- Supports RACF
- Supports Office Vision
- Compatible to 3477 FC terminals
- 132 column mode (5250/VT)
- Multi-session support
- Hardcopy and host system printing directly from the host application
- Host print in VT emulation
- Printing via LU1 (SCS) and LU3 (DSC)
- Printing via escape sequences
- DDM graphics support
- Support for euro sign
- Macro recorder

Language Support

HOBLink J-Term supports English and German. When you log on to the Web server, the language of the client operating system is queried and automatically used by HOBLink J-Term. The language can be changed via the setup options. HOBLink J-Term supports numerous host languages and code pages for IBM mainframes.

Programming Interfaces

Other programs can access HOBLink J-Term over current programming interfaces such as EHLLAPI, OHIO and OLE.

Terminals Emulated

- 3270
- 5250
- VT52 through VT525
- HP700
- SINIX 97801
- 9750
- RDP client for Windows TS

System Requirements

Client System

On the client side, any browser can be used that fully supports Java 1.1.7 or higher.

Web Server

HOBLink J-Term can be installed on any operating system that supports a Java Virtual Machine with JDK 1.1.7 or higher. Any Web server software can be used.

HOB GmbH & Co. KG
Schwadermuehlstr. 3
90556 Cadolzburg

Phone +49 9103 715 0
Telefax +49 9103 715 271
E-mail marketing@hobsoft.com
support@hobsoft.com
Phone hotline +49 9103 715 161
Fax hotline +49 9103 715 299

Branch offices abroad
Eindhoven, Malta, New York, Paris, Vienna

Visit us at our World Wide Web site:
<http://www.hobsoft.com>

Information in this document is subject to change without notice. HOB is not liable for any omissions or errors which may be contained in this document. Product information contained herein is from October 2007
Any trademarks in this document are the property of their owners.

