



# **HOB SCS**

## **Version 2.1**

### **Administrator's Guide**

HOB, Inc.  
245 Saw Mill River Road  
Suite # 106  
Hawthorne, NY 10532  
USA

Phone (Toll Free): (866) 914-9970  
Phone: (646) 465-7650  
Fax: (646) 437-3448

E-mail: [info@hobsoft.com](mailto:info@hobsoft.com)  
Web: [www.hobsoft.com](http://www.hobsoft.com)

HOB GmbH & Co. KG  
Schwadmühlstraße 3  
90556 Cadolzburg  
Germany

Phone: +49-9103-715-0  
Fax.: +49-9103-715-271

E-mail: [support@hob.de](mailto:support@hob.de)  
Web: <http://www.hob.de>

January 11



HOB SCS software and documentation © 2011 by HOB

Phone: (646) 465-7650 Fax: (646) 437-3448

Information in this document is subject to change without notice, and does not represent a commitment on the part of HOB.

All rights are reserved. Reproduction of editorial or pictorial contents without express permission is prohibited.

HOB SCS software and documentation have been tested and reviewed. Nevertheless, HOB will not be liable for any loss or damage whatsoever arising from the use of any information or particulars in, or any error or omission in, this document.

IBM is a trademark of the IBM Corporation.

Sun Microsystems, HotJava, and Java are trademarks or registered trademarks of Sun Microsystems, Inc.

Netscape and Netscape Navigator are registered trademarks of Netscape Communications Corporation.

VMware, VMware Infrastructure and VMware Infrastructure Client are trademarks or registered trademarks of VMware Inc.

Microsoft and Microsoft Internet Explorer are registered trademarks of Microsoft Corporation.

All other product names are trademarks or registered trademarks of their respective corporations.

### GNU General Public License Disclaimer

This product includes software code developed by third parties, including software code subject to the GNU General Public License (GPL) or GNU Lesser General Public License (LGPL). The terms of the GPL and LGPL are available in this documentation (See Appendix A: Open Source Licenses, pages 29, ff). For your convenience all Licenses regarding third party software are in the folder Licenses on the install medium. The source code developed by third parties is also in the folder src on the install medium.

The third party Code used in this product is distributed WITHOUT ANY WARRANTY and is subject to the copyrights of one or more authors. For details, see the Code in the folder src and the License terms in the folder Licenses on the install medium.

## Symbols and Conventions

This manual uses certain symbols and conventions, the meaning of which is defined below:



This symbol is used to mark useful tips that can make your work easier.



This symbol indicates text of an especially informative nature.



This symbol indicates an important tip or procedure that may have far-reaching effects. Please consider carefully the consequences of settings you make here.



This symbol indicates there is additional information on this topic in the online help.



Procedural steps are indicated by this symbol: The individual steps are numbered as follows, e.g.

1. Step
2. Step ...



This symbol indicates active cross links (hyperlinks) to internal or external content. ...

- Keys or key combinations are displayed in square brackets, e.g. [Space].
- References to program commands and dialog boxes are printed in bold type, e.g., “Select the command **Open**...”
- Options and buttons that can be selected in dialog boxes are printed in bold type, e.g., “**user defined**.”
- Text, screen displays and file names you enter yourself are displayed in the font `Courier New`. This input is case sensitive!
- In this documentation, the product name HOB WebSecureProxy is abbreviated as WSP.

## Contents

<b>HOB SCS</b>	<b>i</b>
<b>Contents</b>	<b>1</b>
<b>The Purpose of this Manual</b>	<b>3</b>
<b>What is HOB SCS?</b>	<b>3</b>
Benefits of HOB SCS.....	3
<b>1 HOB SCS SP: Installation as a Software Platform</b>	<b>5</b>
1.1 System Requirements .....	5
1.2 Installation Step-By-Step .....	5
1.2.1 Launching HOBmin .....	9
1.2.2 Launching HOB RD VPN .....	9
<b>2 HOB SCS VP: Installation as a Virtual Platform</b>	<b>11</b>
2.1 System Requirements .....	11
2.2 Installation Guide .....	11
<b>3 Updating from Previous Versions to HOB SCS 2.1</b>	<b>12</b>
<b>4 HOBmin – The SCS Administration Tool</b>	<b>13</b>
4.1 SCS Section.....	14
4.1.1 Updates .....	14
4.1.2 Backup.....	14
4.1.3 Certificate Settings .....	16
4.1.4 Time Settings.....	16
4.1.5 Reboot and Shutdown.....	16
4.2 HOB Software Section.....	16
4.2.1 HOB RD VPN, HOB RD VPN Compact, HOB RD VPN NetAccess .....	17
4.2.2 HOB RD VPN Customization .....	17
4.2.3 PPP Tunnel Gateway (Optional).....	18
4.2.4 PPP Tunnel Server (Optional).....	19
4.3 HOBmin Section .....	20
4.3.1 Access Control .....	20
4.3.2 User Administration .....	20
4.4 Services .....	22
4.4.1 Log Server .....	22
4.4.2 SSH Server.....	22
4.4.3 NTP Server .....	22
4.5 Networking .....	23
4.5.1 Network Settings .....	23
4.5.2 Static Routes .....	23
4.5.3 Query Servers .....	23
4.6 Information Section .....	24

- 4.6.1 Show Status .....24
- 4.7 System Information.....24
  - 4.7.1 Processes .....24
  - 4.7.2 Logfiles .....24
  - 4.7.3 Documentation .....24
  - 4.7.4 Support .....24
- 5 Information and Support 27**

---

- 6 Appendix A: Open Source Licenses 29**

---

- 6.1 GNU GENERAL PUBLIC LICENSE.....29
  - 6.1.1 Preamble .....29
  - 6.1.2 TERMS AND CONDITIONS .....30
- 6.2 GNU GENERAL PUBLIC LICENSE.....41
  - 6.2.1 Preamble .....41
  - 6.2.2 GNU GENERAL PUBLIC LICENSE: TERMS AND CONDITIONS FOR COPYING, DISTRIBUTION AND MODIFICATION .....42
  - 6.2.3 NO WARRANTY .....45
- 6.3 GNU LESSER GENERAL PUBLIC LICENSE .....47
  - 6.3.1 Preamble .....47
  - 6.3.2 GNU LESSER GENERAL PUBLIC LICENSE .....49
  - 6.3.3 NO WARRANTY .....54
- 7 Index 55**

---

## The Purpose of this Manual

The purpose of this manual is to provide you with basic information about HOB Secure Communications Server (hereafter HOB SCS), so that you can make the right decisions as to where and how to use this software to your best advantage.

In the following you will find, in addition to the software and hardware requirements, a step-by-step installation guide and a description of the individual components that are required in order to obtain a comprehensive software solution.

## What is HOB SCS?

HOB SCS is a hardened, Open Source-based operating system, which is both easy to install and administrate. HOB SCS is a software component for the secure remote computing solution HOB Remote Desktop Virtual Private Network (hereafter HOB RD VPN), and has been specifically designed for use with HOB RD VPN, providing it with a highly secure and stable operating system. HOB SCS comes as a software platform installed from a DVD (HOB SCS SP) and as a virtual platform installed as an imported virtual appliance (HOB SCS VP).

Updates and patches to the operating system can be installed easily and in no way interfere with the functionality of HOB RD VPN<sup>1</sup>.

## Benefits of HOB SCS

HOB SCS can be used under the widest array of application areas. There are versions for x86 (32 bit) and EM64T (64 bit), each with versions specially adapted for 1 processor architectures, for up to 16 processor units, and for up to 64 processor units.

The operating system HOB SCS was deliberately kept as simple as possible and free of unnecessary ballast. The integrated installation and administration program helps even newcomers get familiar with the use of Open Source software. HOB RD VPN can be run using its entire range of features and functions, including configuration adaptations: the integrated administration tool makes this possible. HOB SCS is, nonetheless, a complete operating system, with which IT professionals will enjoy working.

---

<sup>1</sup> For detailed information on HOB RD VPN, please consult the HOB RD VPN Administrator Guide or the HOB international website [www.hobsoft.com](http://www.hobsoft.com).





# 1 HOB SCS SP: Installation as a Software Platform

## 1.1 System Requirements

- x86 or EM64T platform as of Pentium III, 1 GHz
- Minimum 512 MB RAM
- Minimum 4 GB hard drive
- At least 1 network card

## 1.2 Installation Step-By-Step

In the following you will find a step-by-step guide to installing HOB SCS with HOB RD VPN. This installation serves as an example for the most common installation scenarios HOB customers will encounter. HOB SCS can be installed on any standard hardware meeting the system requirements listed above.

It is recommended to install HOB SCS on a machine located within the DMZ between the corporate firewalls. This is the best logical position for such an installation.



**HOB SCS is a full operating system. Installing this software will reformat the drive on which it is being installed, i.e., the hard drive, partition or VM will be completely overwritten and all previously stored data erased.**

**Be sure there is no data you wish to retain at the installation location.**

### 1. Insert DVD

After inserting the HOB SCS DVD, you will have to boot your machine from this DVD to install the HOB SCS operating system and, if so desired, HOB RD VPN. For more information on HOB SCS, press the F1 key. To begin the installation process, press the enter key. A system check for the minimum requirements will be carried out.

After this check is successful, you can either press the enter key again to continue the installation, or you can abort the installation: in this case, no changes will have been made to your hard disk or existing OS.

The installation can be aborted at any time prior to step 17, "User Settings are Complete" (see page 8).

## 2. Select Keyboard Layout

In this window, select the keyboard layout you are using and press the enter key to continue. This keyboard setting is only used during installation or, when necessary, logging in over the console.

## 3. Enter Host and Domain Name

In this window, enter the host and domain name of the server on which you are installing HOB SCS and press the enter key to continue. The host and domain name are required for HOB RD VPN to function immediately after installation. These settings can be changed when necessary any time after installation using the HOBmin program. Please make sure that the host and domain names entered here correspond completely to those entered in your DNS server. See section 5, Network Settings for Selected Network Card(s), on page 6.

## 4. Select Network Card

In this window, select the network card(s) you want to use. You can select all available network cards or only one. At least one must be selected. If you select more than one, each card can be configured individually. Use the arrow keys to highlight the desired network card/s and use the space bar to select it/them (places an "x" in front of the card's name).

Deploying several network cards can be useful: for example, one can be used for Internet traffic and another for internal data transfers (LAN traffic) and/ or for network administration.

These settings can be changed when necessary any time after installation using the HOBmin program. See section 5, Network Settings for Selected Network Card(s), on page 6.

## 5. Network Settings for Selected Network Card(s)

If you have selected multiple cards, they can all be configured here.

Enter here the IP address and Netmask number of your selected network card and press the enter key to continue.

These settings can be changed when necessary any time after installation using the HOBmin program. See section 5, Network Settings for Selected Network Card(s), on page 6.

## 6. Default Gateway

Enter here the IP address of the default gateway and press the enter key to continue.

These settings can be changed when necessary any time after installation using the HOBmin program. See section 5, Network Settings for Selected Network Card(s), on page 6.

## 7. DNS Server

In this window you can enter the IP addresses of up to three DNS servers. You must enter at least one.

These settings can be changed when necessary any time after installation using the HOBmin program. See section 5, Network Settings for Selected Network Card(s), on page 6.

## 8. User Name and Password

Enter here the user name and password you want to use for HOB SCS. The username and password for HOB RD VPN will be configured at a later stage. For more information on creating and administrating HOB RD VPN users, see the HOB RD VPN Administration Guide. This user can also logon to the console, so choose a secure password.

These settings can be changed when necessary any time after installation using the HOBmin program. See section 4.3.2, User Administration, on page 20.

## 9. Select Time Zone

In this window, set the date and time zone for your server.

These settings can be changed when necessary any time after installation using the HOBmin program. See section 10, Time Settings on page 7.

## 10. Time Settings

Here you can check and/or correct the date and time on your server. So that everything works properly right from the start, you should check and, if necessary, adjust the time settings now.

The server time settings can be checked/corrected after installation using the HOBmin program. See section 10, Time Settings on page 7.

## 11. Setting NTP Servers

In this window you can select up to two NTP servers for time synchronization (optional, none need be set). The NTP servers can be selected from the list of detected NTP servers or, if desired, select "Edit" to enter an NTP server of your choice.

These settings can be changed when necessary any time after installation using the HOBmin program. See section 10, Time Settings on page 7.

## 12. Install HOB Software

Here you can select the HOB software to be installed together with HOB SCS.

You can install HOB RD VPN, HOB RD VPN Compact or HOB RD VPN NetAccess. Additionally, the HOB PPP Tunnel Server or HOB PPP Tunnel Gateway can be installed. Also, you can install only the HOB PPP Tunnel components:

RD VPN with RDP (JWT) (with or without the PPP Tunnel Server, with or without the PPP Tunnel Gateway)

RD VPN with Terminal Emulations and RDP (J-Term)( with or without the PPP Tunnel Server, with or without the PPP Tunnel Gateway)

RD VPN Compact (with or without the PPP Tunnel Server, with or without the PPP Tunnel Gateway)

RD VPN NetAccess (with or without the PPP Tunnel Server, with or without the PPP Tunnel Gateway)

HOB PPP Tunnel Gateway (with or without the HOB PPP Tunnel Server)

HOB PPP Tunnel Server (with or without the HOB PPP Tunnel Gateway)

You can install all three HOB software components (HOB RD VPN, HOB PPP Tunnel Gateway, HOB PPP Tunnel Server), or any combination thereof. The following four steps pertain to this software installation.

### 13. License Agreement for HOB Software

The license agreement must be accepted to continue with the installation.

### 14. License Key

In the License Key field, enter a valid license key for HOB RD VPN HOB RD VPN Compact, HOB RD VPN NetAccess or, if you want a trial installation, leave this field blank. You will have a fully functional trial installation for thirty days, after which you can license the software or stop using it.

The license key can be entered or, if new functionalities/features are purchased, changed after installation using the HOBmin program. If you only install the HOB PPP Tunnel components, no license key need be entered.

### 15. Install HOB RD VPN

Enter here the IP address of the server to which you want HOB RD VPN or HOB RD VPN Compact to connect. This will be a Windows Terminal Server. If you have also installed terminal emulation capacity (J-Term), you can configure 3270, 5250 or VT Telnet connectivity. This can also be done after installation using HOB EA Administration (for more information, please refer to the relevant sections in the HOB RD VPN Administrator Guide). If you have installed HOB RD VPN NetAccess, the window for terminal configuration will not appear.

### 16. HOBmin Administration Server

In this window you can set the port on which HOBmin, the HOB SCS administration tool, is to listen. As default, port 10000 is set. You can also set the HOBmin server to only accept connection requests from either one or two allowed IP addresses or networks. This is meant to increase security on a server that is accessible from the Internet. If you leave these fields blank, HOBmin will accept logons (with the proper logon credentials) from any IP address. The settings made here can be changed in the HOBmin program by an administrator at any subsequent time (see section 4.3.1 Access Control, page 20, for more information).

### 17. User Settings are Complete



A window appears with the text “User settings are complete. The system is ready to begin installation now. The hard drive [name of hard drive appears] will be formatted and all data will be deleted. Continue?”

There are three options listed under the text:

**OK** – Select this to finalize the installation. The hard drive will be formatted and all existing data on it irretrievably lost.

**Cancel** – Select this to cancel the installation. No change will be made to the existing system.

**Back** – Select this to return to the previous installation window. Each installation step (window) has a **Back** option, with which you can return to the previous step to make any desired changes.

## 18. Conclusion

After selecting “OK” in the window mentioned above, the installation will be carried out. After installation is complete, a new window will open and instruct you to remove the DVD and press any key to reboot. This window will also give you a URL to enter into your browser in order to access the HOBmin server. Alternatively, you can enter the HOBmin server’s IP address.

### 1.2.1 Launching HOBmin

After completing the installation, reboot your system to launch HOB SCS. To open the administration tool HOBmin, you will have to start a browser (from a different machine than that on which HOB SCS was installed, as the installation of HOB SCS doesn’t include a browser) and enter the IP address and port on which HOBmin listens (example: 192.168.10.10:10000), as configured in the installation.

### 1.2.2 Launching HOB RD VPN

To open HOB RD VPN, start your browser (Internet Explorer, Mozilla Firefox, Apple Safari, etc.) and enter the IP address of the HOB RD VPN start page which was configured during the installation. Please remember to specify “https” when entering the URL. The HOB RD VPN login page will open. Here, enter the default username and password for HOB RD VPN.

The default login credentials are:

- For administrator rights – username **administrator** – password **adminpw**
- For user rights – username **guest** – password **guest**

If you have logged in as an **administrator**, the HOB RD VPN welcome page will open presenting you with a wide range of options for running or configuring sessions. For more information on this page, please see the HOB RD VPN Administrator Guide.

If you have logged in as a **user**, the HOB EA Session Manager window will open, allowing you to run and edit those sessions for which the user is authorized. As default, this selection is limited. Changes can be made using HOB Enterprise Access Administration, a component of HOB RD VPN. For more information on this component, please see the HOB RD VPN Administrator Guide.



We recommend you perform thorough testing.



## 2 HOB SCS VP: Installation as a Virtual Platform

### 2.1 System Requirements

- Minimum 512 MB RAM
- Minimum 10 GB hard drive in datastore on VM host
- At least 1 network card

### 2.2 Installation Guide

The following is a short guide to installing HOB SCS VP. As this is a virtual appliance, pre-configured (except for your system-specific settings) and ready to run, the installation is simple and fast. HOB SCS VP is optimized for VMware vSphere or higher, and includes the VMware Network Drivers required for smooth integration in the VMware vSphere. This virtual appliance comes with full versions of HOB RD VPN, HOB RD VPN Compact and HOB RD VPN NetAccess.

It is recommended to install HOB SCS VP on a host located within the DMZ between the corporate firewalls. This is the best logical position for such an installation.

We will proceed with the assumption you already have a VMware vSphere installed in your system and are familiar with VMware technology.

- Download the HOB SCS VP software either from the provided link to our Website using your login credentials, or from the delivered software medium (located in the OVF folder).
- Import the virtual appliance with your VMware vSphere Client, using the import Virtual Appliance function. While importing, you will have to accept the EULA, name your virtual appliance, select the location in the datacenter, the host and datastore where the virtual appliances files are to be stored, and map the networks in the virtual appliance to those in your virtual infrastructure. For more information on importing virtual appliances, please consult your VMware vSphere documentation.
- After importing HOB SCS VP, go back to your VMware vSphere Client. If the host on which you install HOB SCS VP supports paravirtualization, we recommend that you set this now.  
To do this, in the VMware vSphere Client, select “Edit VM settings > Options” and, on the “Options” tab, activate the “Support VMI Paravirtualization” checkbox.
- Open the console and start the Virtual Machine. HOB SCS will boot the kernel and you can select the settings as described in the Software Appliance Installation Section.

After installation and completed configuration, HOB SCS VP runs just as the software appliance version HOB SCS SP. All further information in this documentation, unless explicitly otherwise stated, is valid for both versions.

## 3 Updating from Previous Versions to HOB SCS 2.1

If you already have installed HOB SCS Version 1.1, 1.1.1 or 1.2, you can update this to the new version 2.1.

To do this, proceed as follows:

### 1. Create a Backup

Create a backup copy in the existing HOB SCS system via the function HOBmin → Backup. This can be either an automatically or manually created backup.

If the backup copy is stored on the HOB SCS system, it will have to be copied to a remote system via the function HOBmin → Backup.

### 2. Install HOB SCS 2.1

After the backup has been created and safely stored, install the new HOB SCS version 2.1. Proceed as with a new installation. Any values entered during installation (incl. IP addresses, HOBmin users and passwords, etc.) will be replaced by those from the backup copy when that is played back in.

### 3. Restore HOB SCS

After the new version of HOB SCS has been installed and the system restarted, the backup copy made previously has to be transferred to the newly installed HOB SCS version. To do this, use the function HOBmin → SCS → Backups and upload the backup. Then click the Restore button for the uploaded backup. The configuration will then be restored.

After a backup has been restored, HOB SCS must be restarted to activate the changed settings.

Notes:

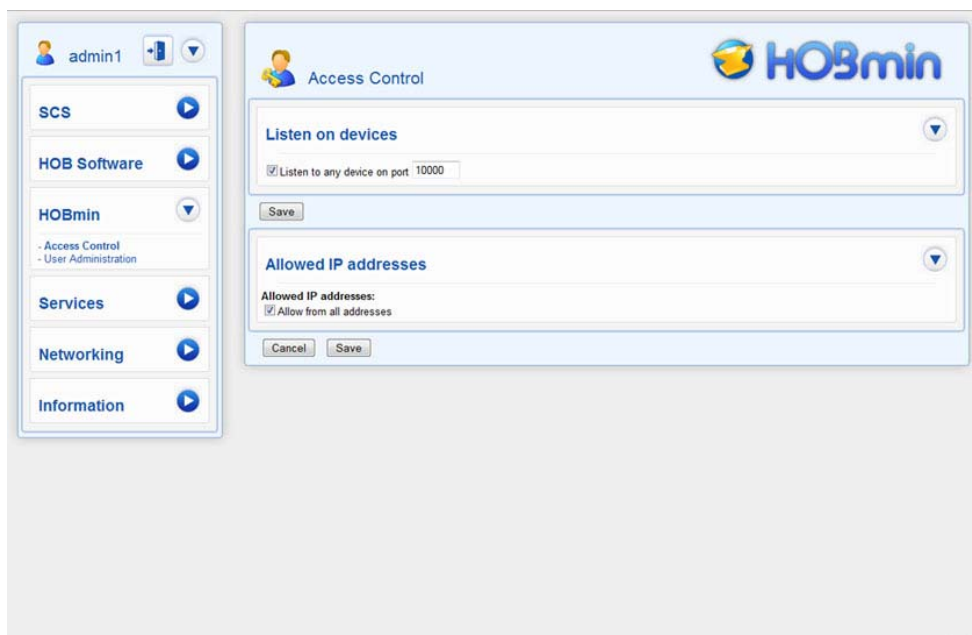
HOB SCS can only be updated in the above-described manner. The reasons for this are, among others, the following:

1. After a new installation, there are no “artifacts” left over from the older version.
2. An update can also be done on new hardware.
3. The customer can also easily return to the previous version, as he has to have made a backup.
4. The separation of installation and updating makes the update process more flexible.  
For example, by using a patch the update process can be adapted to specific customer needs.



## 4 HOBmin – The SCS Administration Tool

HOBmin is an integrated administration tool for HOB SCS and HOB RD VPN. With this tool, authorized users, e.g., system administrators can make configuration adaptations to HOB SCS and/or access the HOB RD VPN administration tool, HOB EA Administration. HOBmin is organized in six main sections, “SCS,” “HOB Software,” “HOBmin,” “Services,” “Networking” and “Information.” By default, only the “System Information” item is expanded, i.e., showing its individual menu items. There are also a logout button and an “expand all menu items” button at the top of the menu on the left, where the user name, in our demonstration “admin1” also will be displayed. By clicking one of the menu items, the contents of that item will be displayed in the right-hand pane.



The HOBmin window showing the Access Control pane on the right with the six main sections listed on the left.

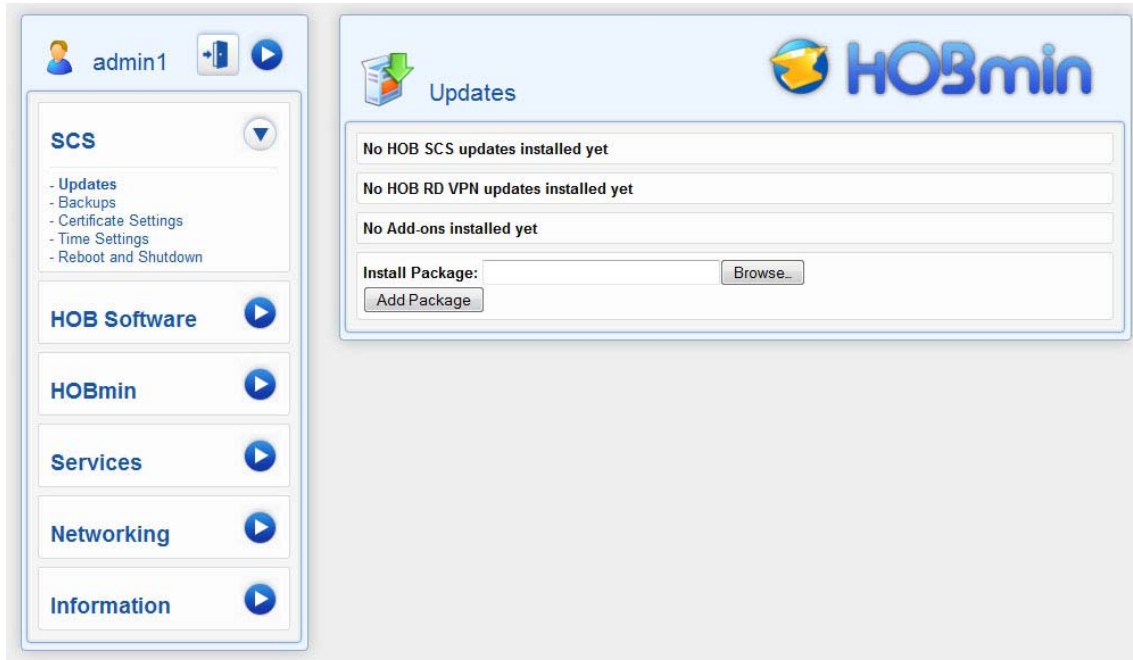
To open HOBmin, using a browser, enter the DNS name or IP address of the machine on which HOB SCS is installed, plus the listen port configured during installation (as default, port 10000). A login page opens in which you enter the user name and password created during installation. You will then see the HOBmin window, which is described in detail in the following sections.



HOBmin can only be accessed over https. Please remember to specify this when entering the URL.

## 4.1 SCS Section

### 4.1.1 Updates



On the “Updates” tab you can install patches for HOB SCS, HOB RD VPN or additional components (Add-ons). To install a patch you must first download it from the HOB Website or if the HOB PPP Tunnel components are to be installed at a later time, you can find the required patches on the installation medium under “Patches.” A patch is a packed file in the form `hob-scs.name-version.tar.bz2` (e.g., `hob-scs.ppptgw-2.1.tar.bz2`). Use the “Browse...” button to find a patch that has been downloaded to your system and, once a patch has been selected, use the “Add Package” button to install it. Follow the instructions in HOBmin.

### 4.1.2 Backup

**The Backup tab** – This tab has three activity areas.

- First, there is the “Create Backup” button: Click this button to create a backup copy of the HOB SCS operating system’s configuration and the entire HOB RD VPN configuration (LDAP-dependent settings are not backed up). Here you can also add a comment to the backup you create in case you want a reference for subsequent use.
- The second area lists existing backups. After installation, there is only one backup, created directly after installation in order to restore the default configuration settings, if desired. When backups are created, they will be listed here with check boxes, with which you can select the backup you wish to download to your local machine or restore. To restore a backup, click the “Restore” button at the very right of the “Existing backups:” row. You will then be asked whether you are sure you

want to restore the selected file. Click the “No! Back to Index!” button to return to the previous screen, or click the “Yes! Restore now!” button to continue the restoration process. After clicking the “Yes! Restore now!” button, the backup file will be compared to the currently running system for differences. After this comparison is complete, you will be asked again. After the backup has been restored, you will be prompted to reboot HOB SCS.

To delete backups, select the backup/s to be deleted and click the “Delete selected backup/s” button.

You can also send backup files to an external server (recommended, for example, for disaster recovery). To do this, you have to enter the login credentials for the server to which the logs are to be sent, as well as its host name and path. This file transfer can be done over either FTP or SSH-protected via SCP (Secure Copy Protocol) or with SMB (to Windows servers).



Please enter the name and share of your SMB/CIFS server! For example: //myservername/share (Please note: It is imperative to use “/” instead of “\”). This is the root name of your share in the network. You can enter a path in the “Path:” field.

Example: Path: /Documents/backups.

- The third area is for uploading backups to the HOBmin server that have been saved on the SCP, FTP or SMB (Windows) servers specified in the above-mentioned fields.

**The Planned Backups tab** – This tab also has two activity areas.

- First, there is the “Existing planned backups:” area, where the existing planned backups are listed. This list shows the type of planned backup (daily or weekly), the date and time (for daily backups only the time is shown), the server to which the backups are sent, the path to this server, the user on the remote or local system under which the backup is stored, the status of the backup (“Pending” or “Worked”) and a field in which the planned backup can be deleted.
- In the second area you can create new planned backups. These can be set to be run either daily, at a specified time, or weekly, on a specified day and time. These backups can be stored either locally or on a specified external server, which is defined in the area that opens after selecting the type of remote server to be used (SCP, FTP, or SMB).



Please enter the name and share of your SMB/CIFS server! For example: //myservername/share (Please note: It is imperative to use “/” instead of “\”). This is the root name of your share in the network. You can enter a path in the “Path:” field.

Example: Path: /Documents/backups.

### 4.1.3 Certificate Settings

The Certificate Settings screen two panes and in the lower pane it has four tabs:

- In the upper pane the details of the currently used certificates for HOBmin and for HOB RD VPN are displayed. Whether these certificates are one and the same is also displayed.
- **Create HOBmin certificate** – Here you can create a new, self-signed certificate for the HOBmin server. It is recommended to create or upload a new certificate immediately after installation, as the default certificate created after installation is for demonstration purposes only and provides minimal security. By checking the radio button at the bottom of this section you can also use this certificate for HOB RD VPN.
- **Upload HOBmin certificate** – With this tab you can upload an existing self-signed or third-party certificate in PEM format for use with HOB SCS and, if desired, for HOB RD VPN.
- **Manage HOB RD VPN Certificates (security units)** – Here you can upload and download HOB security units. You can also download automatically created backups of your old security units. If HOBmin and HOB RD VPN use different certificates, another pane is displayed in which you can convert one certificate to the other, i.e., set both services to use the same certificate.
- **Web Server Gate certificates** – In the event that you want to access SSL URLs (https) over the Web Server Gate, HOB RD VPN will need the corresponding root certificate. Public root certificates are included in the installation. If, however, you want to use your own certificates, you can import them here.

### 4.1.4 Time Settings

Here you can monitor and/or edit your server's time settings for any time zone in the world. The time information stated in the top section is a static display; to see the actual current time on the server, please reload the page.

### 4.1.5 Reboot and Shutdown

In this window you can reboot or shut off the HOB SCS operating system (with the buttons "Reboot System" or "Shutdown System"), or restart only the program HOBmin "Restart HOBmin").

## 4.2 HOB Software Section

This section depends on the installed HOB product/s (HOB RD VPN, HOB RD VPN Compact, HOB RD VPN NetAccess and/or the HOB PPP Tunnel components, HOB PP Tunnel Server and HOB PPP Tunnel Gateway).

### 4.2.1 HOB RD VPN, HOB RD VPN Compact, HOB RD VPN NetAccess

Here you can see the status of the HOB RD VPN solution/s you have installed. The following actions can be carried out from this window:

- Start or Stop / Restart HOB RD VPN or refresh the status display.
- Start HOB RD VPN Administration – With this button you can open the HOB EA Administration program, which is the administration tool for the configuration of all the HOB software installed with HOB SCS. This is the only way to start HOB ES Administration if your WebSecureProxy is not running. EA Administration can also be started from the HOB RD VPN html page if you are logged in as an administrator **and** the WebSecureProxy is running.
- For more information on these programs and all other HOB software, please refer to the corresponding software manual, e.g., the HOB RD VPN Administrator Guide, or the HOB website [www.hobsoft.com](http://www.hobsoft.com). Also see section 1.2.2, Launching HOB RD VPN, on page 9.
- If you have not entered a license key (license number) during installation, you can enter one here or, if you have purchased a key to activate additional features or functionalities, you can enter this here. Even if a key has been entered, for security reasons, this field afterwards will appear blank.
- In this section you can download a WebSecureProxy configuration file.

### 4.2.2 HOB RD VPN Customization

This section is only available if HOB RD VPN or HOB RD VPN Compact have been installed and relates only to these products.

With this powerful module you can customize HOB RD VPN / Compact for your needs.

- **Bookmarks** - In this section you can place URLs as bookmarks on the HOB RD VPN / Compact login page. Simply enter the URL and select the corresponding Website.
- **Download, Upload and Delete HOB RD VPN Welcome Sites** – Here you can customize your login pages. Please note, the pages created by the system cannot be modified, as these pages may be overwritten by updates.
- **HOB RD VPN Banner Exchange** – Here you can replace the HOB RD VPN banner with a graphic image of your choice.

### 4.2.3 PPP Tunnel Gateway (Optional)

The screenshot shows the HOBmin administration interface for the HOB PPP Tunnel Gateway. On the left is a sidebar with navigation options: SCS, HOB Software (with sub-items: HOB RD VPN, HOB RD VPN Customization, HOB PPP Tunnel Gateway), HOBmin, Services, Networking, and Information. The main content area is titled 'HOB PPP Tunnel Gateway' and features the HOBmin logo. It displays a table with the following data:

Service Name	Status
HOB PPP Tunnel Gateway	Stopped

Below the table are 'Start' and 'Refresh' buttons. The configuration section includes the following fields:

- Local IP: all local addresses (dropdown)
- Local Port: 5556 (text input)
- Local L2TP Gateway: all local addresses (dropdown)
- Remote L2TP Gateway: localhost (text input)
- Server's Net Address: (text input)
- Prefix: 32 (dropdown)

A 'Save' button is located below the configuration fields. A note at the bottom states: 'The HOB PPP Tunnel Gateway redirects PPP Tunnel connections to an L2TP server (e.g. Microsoft RRAS, HOB PPP Tunnel Server, Router with L2TP Server). The PPP Tunnel has to be set up for WebSecureProxy.'

This item will only appear if the HOB PPP Tunnel Gateway component was selected in the installation of HOB SCS with HOB RD VPN, or subsequently installed as an add-on. The HOB PPP Tunnel Gateway Add on is included on the installation medium in the folder "Patches." The HOB PPP Tunnel allows a remote user (e.g., a business traveler, or someone working in a home office) to connect to the enterprise network over the Internet. The remote user gains full access to all network resources, just as if he/she were working on a machine within the enterprise network. A major advantage of this solution over classic IPsec VPNs is that no additional installation of software on the client machine is required. The only requirement on the client side is that the client machine must have a java-enabled browser and Windows Vista or newer, Mac OS X, Linux FreeBSD or Solaris as OS. On the server side (e.g., where HOB SCS is installed), three components are required: the HOB WebSecureProxy, xbigw16 (e.g. the HOB PPP Tunnel Gateway), a functioning L2TP server (e.g., the HOB PPP Tunnel Server, see below). These components can be installed either all on the same machine, or on separate machines, depending on your configuration preferences. If HOB RD VPN is installed in the DMZ (recommended), you should install at least the L2TP server (e.g., HOB PPP Tunnel Server) in the local LAN.

The HOB PPP Tunnel Gateway section is divided into two parts:

- In the top part you see the tunnel gateway's status, which is either "Running" or "Stopped."
- A "Start" button, if the tunnel gateway isn't currently running, or a "Stop" and a "Restart" button if the tunnel gateway is already running. Refresh the screen to update the display.
- The second action area is important for the configuration of the PPP Tunnel Gateway. In the field "Local IP:" you can enter the IP address of the network card at which you want the gateway to listen for connections from

HOB RD VPN (optional, only used if there are more than one network cards active on the machine). It is safe to leave the default settings for all local addresses.

- The “Local Port:” field is required. In this field you enter the port to be listened on for connections from HOB RD VPN. This port must be the same one as is configured for the PPP Tunnel section of HOB RD VPN Administration. As default, port 5556 is set on both.
- The “Local L2TP Gateway:” field is optional and only needed if the L2TP server has more than one network card. This is the address where the Gateway communicates with the L2TP server, e.g., HOB PPP Tunnel Server.
- The “Remote L2TP Gateway:” field is required and is, as default, set to localhost (if you have installed the HOB PPP Tunnel Server on the same machine). You must enter here the IP address (or, if supported, the DNS name) of the L2TP server (e.g., the HOB PPP Tunnel Server, a Microsoft RRAS Server, or a router with an L2TP server).
- The server’s net address: This is the network the client should reach over the HOB PPP Tunnel. Enter here the network for which the L2TP server assigns IP addresses. For example: The L2TP server assigns the IP addresses 192.168.10.10 – 192.168.10.20, you have to insert 192.168.10.0/24. Although this entry is only used by PPP Tunnel clients running under Mac OS X, Linux Free BSD and Solaris, it **must** be entered.

For more information on the HOB PPP Tunnel Gateway, please see the corresponding sections in the HOB RD VPN Administrator Guide.

#### 4.2.4 PPP Tunnel Server (Optional)

This item will only appear if the HOB PPP Tunnel Server component was included in the installation of HOB SCS with HOB RD VPN, or subsequently installed.

The HOB PPP Tunnel Server section is divided into two parts:

- In the top part you see the tunnel gateway’s status, which is either “Running” or “Not Running.” This display is static, therefore you have to click the “Refresh Status” button to see if the status has changed.
- A “Start” button, if the tunnel server isn’t currently running, or a “Stop” and a “Restart” button if the tunnel server is already running.
- The “Server Address:” field (required) – This is set automatically to the last address listed in the IP-Address Range.
- The “IP-Address Range:” fields (required) – Enter here the IP address range of for the client’s dynamically generated IP addresses, e.g., 192.168.10.246 to 192.168.10.254.
- The “DNS 1:” field (required) – Enter here the IP address of your DNS server.
- The “DNS 2:” field (optional) – Enter here the IP address of your second DNS server, if there is one.

- The “WINS 1:” field (optional) – Enter here the IP address of your WINS server.
- The “WINS 2:” field (optional) – Enter here the IP address of your second WINS server, if there is one.
- The “EA Server:” field (required) – Enter here the IP address of your HOB EA Server. You can set this to localhost if the HOB PPP Tunnel Server is on the same machine as HOB RD VPN. If one is located in the DMZ and one in the LAN, you have to allow communication over Port 13273 In your firewall.
- The “Save” button – Click this button to save and activate your configuration.

## 4.3 HOBmin Section

### 4.3.1 Access Control

In the Access Control screen there are two sections:

- **Listen on Devices:** Here you can set HOBmin to listen on all devices (=Ethernet cards) on the same port, or set the devices individually to listen to different ports. After installation, “Listen on all devices, on port XXXX” is set (10000 is the default port).
- **Allowed IP Addresses:** Here you can set HOBmin to accept access from any IP address, or you can set it to accept access from only those IP addresses or networks you add here. As default, HOBmin is set to accept access from all IP addresses. This default setting can be changed at any time, also during installation, thus you can protect your system from the very beginning. Valid entries are:  
IP addresses: 192.168.10.10  
Networks: 192.168.10.0 or 192.168.10.0/24



To achieve higher security, it is recommended to use the IP address list to accept access to HOBmin only from trusted IP addresses or networks, especially if HOBmin is to be accessible over the Internet. This setting will, however, prohibit users as well as administrators from accessing HOBmin from any computer whose IP address has not been entered, greatly reducing flexibility. It is up to the system administrator or corporate IT policy makers to weigh the security advantage against the advantage of flexibility here.

### 4.3.2 User Administration

The user administration window enables users with administration rights to change user language settings (currently, English, French or German), passwords and to create new users. There is one (and only one) root user set as default. This user cannot be deleted. A password can be set for this user but, for reasons



of security, this is not recommended. If you want to set your SSH server to accept root logins (see section 4.4.2 SSH Server, on page 22 ), you will have to enter a root password here. A user with administrator rights has full access to all HOBmin functions and features. A user with read-only rights, in addition to viewing settings, can change only his/her own password or language setting and cannot create new users. If you plan to use the console login (e.g., over SSH) for the new user, you must activate the “System User” checkbox. Users created here are for HOBmin only; HOB RD VPN users have to be created in the HOB RD VPN admin tool, HOB EA Administration. For more information on this, please refer to the relevant sections in the HOB RD VPN Administrator Guide.

The Logged in users section, when expanded, shows the currently logged in users in HOBmin. When a user is logged in as an administrator, this administrative user can log out any other logged in user.

## 4.4 Services

### 4.4.1 Log Server

This window has four sections:

- In the first area in you can see the status of your log server (running or not running), and stop or restart it. You can also refresh the view to reflect any changes made.
- In the second area you can set the log level. The available levels are Error, Warning, Info and Debug. This setting determines the type and amount of data that will be logged. HOB WebSecureProxy has to use the Warning setting, thus, if you select only Debug or Error, no HOB WebSecureProxy logs will be available.
- In the third area you can set HOBmin to additionally send all log output to a remote Syslog server of your choice.

### 4.4.2 SSH Server

This window has two sections:

- In the first section you can see the status of your SSH server (running, not running) and stop, start or reload it. You can also see the connected users here, where you can also disconnect their sessions.
- In the second section (Remote Access Options) you can set the SSH server to accept or deny root logins. To enable root logins, a root password must be set in HOBmin User Administration (see section 4.3.2, User Administration, on page 20). Again, for reasons of security, this is not recommended.

If you deselect “Server is listening on all available IP-addresses” you can select the Network Cards (if you have more than one configured) SSH is listening on as well as the listening Port, which as default is port 22.

### 4.4.3 NTP Server

In the NTP Server section, you can see the status of your NTP service. You can also stop, start, or restart your NTP service. In the lower pane of this window, you can see the servers in use and select the ones you want to use. The NTP servers usually are set during installation or, if they weren't set then, they can be set now.

You may have to modify your firewall settings for the NTP servers to function properly!

## 4.5 Networking

### 4.5.1 Network Settings

There are two sections in this window. These sections are described as follows:

- Interfaces (the network card section/s) – Here you can change the network card's (interface's) IP address and mask; if you have several NCs, you can enable or disable them here. If there is only one network card, it cannot be disabled. If you disable an interface (network card) and want to subsequently enable it, you will have to manually re-enter the IP address and mask. This information will, however, be displayed to the right of the entry fields. The default gateway also can be changed here. A system reboot is required to apply changes made to the network card settings.
- In the bottom section, "Settings," DNS servers can be edited or additional DNS servers added. The host and domain names for the server on which HOB SCS, HOBmin and HOB RD VPN are running also can be edited.

### 4.5.2 Static Routes

In this window you can set a static route to reach a host or network that is not accessible from your default gateway. In the field "Type" you select either a host or network. In the "Target" field, enter the IP address of your host or target network, select a prefix from the "Prefix" field and then enter the IP address of the static gateway you want to use in the "Gateway" field. Click the "Add" button to complete the configuration of your static route.

### 4.5.3 Query Servers

This module has two sections and is very helpful for setting up HOB RD VPN and for checking whether the connections to your target servers will work as configured.

In the top section, you can enter the servers you want to access via HOB RD VPN, and the protocol to be used for each of them, e.g., RDP to access terminal servers, http for Web Server Gate servers, etc.

Once a server is added to the list, you can query the servers, e.g., test whether these servers actually can be accessed using the selected protocols. As these connections are protocol-specific, this is not only a port test! This module is very helpful to check if your configurations will work, especially if the connections are to go through firewalls.

To save your server list, enter a name for it in the "Filename" field and click the "Save Server List" button. Once the server list is saved, you can load it the next time you have to check the connections.

In the second section you can make a ping test to a selected server and also resolve DNS Names or IP addresses.

## 4.6 Information Section

### 4.6.1 Show Status

This window provides you with an overview of the status of the HOB Services and System Services installed on the HOB SCS machine. Here you can see whether the services are running and if they are set to autostart. Detailed information is displayed by placing the cursor over the “i” button, and information on the CPU and memory use, as well as the amount of available memory (measured in MiB, short for mebibytes, 1 MiB = 2<sup>20</sup> bytes). This section is for information only; settings cannot be made here. For information on how to make or change settings for the various services associated with HOB SCS, see section 4.4, Services, p.22.


## 4.7 System Information

In this window you can find important system information, such as system host name, operating system name and version number for SCS HOBmin and RD VPN, time on server, CPU information, used and available system resources, etc.

### 4.7.1 Processes

In this section, the processes running on the system are displayed along with information on the loads they place on the system. Individual processes can be terminated or otherwise ended here. However, this is not a recommended practice.

### 4.7.2 Logfiles

The Logfiles window opens with one section displaying the options for viewing the log files. The log file display can be configured to show a wide variety of details. Queries can be saved and run at any time. Query results can also be downloaded as .txt files for further processing. Please see the notes that can be displayed by clicking the information  icons.

### 4.7.3 Documentation

In the Documentation window, links are displayed to the help files of the installed HOB software and to the HOB SCS Administrator’s Guide.

### 4.7.4 Support

This section has two parts. In the top part, you can create/update a support file containing important system information for system debugging and general trouble shooting. This file is created and stored on the HOB SCS server.

You can protect the support file with a password and you can choose which information it is to contain. It can be downloaded to your local machine using the “Download” button in this window, which will appear after the support file has been generated.





## 5 Information and Support

If you would like further information, or if you need product support, you can contact us at:

### Germany

Support <http://www.hob.de/support/hotline.jsp>

E-mail: [support@hob.de](mailto:support@hob.de)

Phone: +49 9103 715-161

Fax: +49 9103 715-299

Home Page: <http://www.hob.de/>

### Worldwide

Web: <http://www.hobsoft.com>

Support: <mailto:support@hobsoft.com>

Phone: +49 9103 715-161

Fax: +49 9103 715-299

Headquarters Phone: +001 (646) 465-7650

(US and  
Canada) Fax: +001 (646) 437-3448





## 6 Appendix A: Open Source Licenses

### 6.1 GNU GENERAL PUBLIC LICENSE

Version 3, 29 June 2007

Copyright (C) 2007 Free Software Foundation, Inc. <http://fsf.org/>. Everyone is permitted to copy and distribute verbatim copies of this license document, but changing it is not allowed.

#### 6.1.1 Preamble

The GNU General Public License is a free, copyleft license for software and other kinds of works.

The licenses for most software and other practical works are designed to take away your freedom to share and change the works. By contrast, the GNU General Public License is intended to guarantee your freedom to share and change all versions of a program--to make sure it remains free software for all its users. We, the Free Software Foundation, use the GNU General Public License for most of our software; it applies also to any other work released this way by its authors. You can apply it to your programs, too.

When we speak of free software, we are referring to freedom, not price. Our General Public Licenses are designed to make sure that you have the freedom to distribute copies of free software (and charge for them if you wish), that you receive source code or can get it if you want it, that you can change the software or use pieces of it in new free programs, and that you know you can do these things.

To protect your rights, we need to prevent others from denying you these rights or asking you to surrender the rights. Therefore, you have certain responsibilities if you distribute copies of the software, or if you modify it: responsibilities to respect the freedom of others.

For example, if you distribute copies of such a program, whether gratis or for a fee, you must pass on to the recipients the same freedoms that you received. You must make sure that they, too, receive or can get the source code. And you must show them these terms so they know their rights.

Developers that use the GNU GPL protect your rights with two steps:

(1) Assert copyright on the software, and (2) offer you this License giving you legal permission to copy, distribute and/or modify it.

For the developers' and authors' protection, the GPL clearly explains that there is no warranty for this free software. For both users' and authors' sake, the GPL requires that modified versions be marked as changed, so that their problems will not be attributed erroneously to authors of previous versions.

Some devices are designed to deny users access to install or run modified versions of the software inside them, although the manufacturer can do so. This is

fundamentally incompatible with the aim of protecting users' freedom to change the software. The systematic pattern of such abuse occurs in the area of products for individuals to use, which is precisely where it is most unacceptable. Therefore, we have designed this version of the GPL to prohibit the practice for those products. If such problems arise substantially in other domains, we stand ready to extend this provision to those domains in future versions of the GPL, as needed to protect the freedom of users.

Finally, every program is threatened constantly by software patents. States should not allow patents to restrict development and use of software on general-purpose computers, but in those that do, we wish to avoid the special danger that patents applied to a free program could make it effectively proprietary. To prevent this, the GPL assures that patents cannot be used to render the program non-free.

The precise terms and conditions for copying, distribution and modification follow.

## 6.1.2 TERMS AND CONDITIONS

0. Definitions.

"This License" refers to version 3 of the GNU General Public License.

"Copyright" also means copyright-like laws that apply to other kinds of works, such as semiconductor masks.

"The Program" refers to any copyrightable work licensed under this License. Each licensee is addressed as "you". "Licensees" and "recipients" may be individuals or organizations.

To "modify" a work means to copy from or adapt all or part of the work in a fashion requiring copyright permission, other than the making of an exact copy. The resulting work is called a "modified version" of the earlier work or a work "based on" the earlier work.

A "covered work" means either the unmodified Program or a work based on the Program.

To "propagate" a work means to do anything with it that, without permission, would make you directly or secondarily liable for infringement under applicable copyright law, except executing it on a computer or modifying a private copy. Propagation includes copying, distribution (with or without modification), making available to the public, and in some countries other activities as well.

To "convey" a work means any kind of propagation that enables other parties to make or receive copies. Mere interaction with a user through a computer network, with no transfer of a copy, is not conveying.

An interactive user interface displays "Appropriate Legal Notices" to the extent that it includes a convenient and prominently visible feature that (1) displays an appropriate copyright notice, and (2) tells the user that there is no warranty for the work (except to the extent that warranties are provided), that licensees may convey the work under this License, and how to view a copy of this License. If the interface presents a list of user commands or options, such as a menu, a prominent item in the list meets this criterion.

## 1. Source Code.

The "source code" for a work means the preferred form of the work for making modifications to it. "Object code" means any non-source form of a work.

A "Standard Interface" means an interface that either is an official standard defined by a recognized standards body, or, in the case of interfaces specified for a particular programming language, one that is widely used among developers working in that language.

The "System Libraries" of an executable work include anything, other than the work as a whole, that (a) is included in the normal form of packaging a Major Component, but which is not part of that Major Component, and (b) serves only to enable use of the work with that Major Component, or to implement a Standard Interface for which an implementation is available to the public in source code form. A "Major Component", in this context, means a major essential component (kernel, window system, and so on) of the specific operating system (if any) on which the executable work runs, or a compiler used to produce the work, or an object code interpreter used to run it.

The "Corresponding Source" for a work in object code form means all the source code needed to generate, install, and (for an executable work) run the object code and to modify the work, including scripts to control those activities. However, it does not include the work's System Libraries, or general-purpose tools or generally available free programs which are used unmodified in performing those activities but which are not part of the work. For example, Corresponding Source includes interface definition files associated with source files for the work, and the source code for shared libraries and dynamically linked subprograms that the work is specifically designed to require, such as by intimate data communication or control flow between those subprograms and other parts of the work.

The Corresponding Source need not include anything that users can regenerate automatically from other parts of the Corresponding Source.

The Corresponding Source for a work in source code form is that same work.

## 2. Basic Permissions.

All rights granted under this License are granted for the term of copyright on the Program, and are irrevocable provided the stated conditions are met. This License explicitly affirms your unlimited permission to run the unmodified Program. The output from running a covered work is covered by this License only if the output, given its content, constitutes a covered work. This License acknowledges your rights of fair use or other equivalent, as provided by copyright law.

You may make, run and propagate covered works that you do not convey, without conditions so long as your license otherwise remains in force. You may convey covered works to others for the sole purpose of having them make modifications exclusively for you, or provide you with facilities for running those works, provided that you comply with the terms of this License in conveying all material for which you do not control copyright. Those thus making or running the covered works for you must do so exclusively on your behalf, under your direction and control, on terms that prohibit them from making any copies of your copyrighted material outside their relationship with you.

Conveying under any other circumstances is permitted solely under the conditions stated below. Sublicensing is not allowed; section 10 makes it unnecessary.

### 3. Protecting Users' Legal Rights From Anti-Circumvention Law.

No covered work shall be deemed part of an effective technological measure under any applicable law fulfilling obligations under article 11 of the WIPO copyright treaty adopted on 20 December 1996, or similar laws prohibiting or restricting circumvention of such measures.

When you convey a covered work, you waive any legal power to forbid circumvention of technological measures to the extent such circumvention is effected by exercising rights under this License with respect to the covered work, and you disclaim any intention to limit operation or modification of the work as a means of enforcing, against the work's users, your or third parties' legal rights to forbid circumvention of technological measures.

### 4. Conveying Verbatim Copies.

You may convey verbatim copies of the Program's source code as you receive it, in any medium, provided that you conspicuously and appropriately publish on each copy an appropriate copyright notice; keep intact all notices stating that this License and any non-permissive terms added in accord with section 7 apply to the code; keep intact all notices of the absence of any warranty; and give all recipients a copy of this License along with the Program.

You may charge any price or no price for each copy that you convey, and you may offer support or warranty protection for a fee.

### 5. Conveying Modified Source Versions.

You may convey a work based on the Program, or the modifications to produce it from the Program, in the form of source code under the terms of section 4, provided that you also meet all of these conditions:

- a) The work must carry prominent notices stating that you modified it, and giving a relevant date.
- b) The work must carry prominent notices stating that it is released under this License and any conditions added under section 7. This requirement modifies the requirement in section 4 to "keep intact all notices".
- c) You must license the entire work, as a whole, under this License to anyone who comes into possession of a copy. This License will therefore apply, along with any applicable section 7 additional terms, to the whole of the work, and all its parts, regardless of how they are packaged. This License gives no permission to license the work in any other way, but it does not invalidate such permission if you have separately received it.
- d) If the work has interactive user interfaces, each must display Appropriate Legal Notices; however, if the Program has interactive interfaces that do not display Appropriate Legal Notices, your work need not make them do so.

A compilation of a covered work with other separate and independent works, which are not by their nature extensions of the covered work, and which are not combined with it such as to form a larger program, in or on a volume of a storage or distribution medium, is called an "aggregate" if the compilation and its resulting copyright are not used to limit the access or legal rights of the compilation's users beyond what the individual works permit. Inclusion of a covered work in an

aggregate does not cause this License to apply to the other parts of the aggregate.

#### 6. Conveying Non-Source Forms.

You may convey a covered work in object code form under the terms of sections 4 and 5, provided that you also convey the machine-readable Corresponding Source under the terms of this License, in one of these ways:

- a) Convey the object code in, or embodied in, a physical product (including a physical distribution medium), accompanied by the Corresponding Source fixed on a durable physical medium customarily used for software interchange.
- b) Convey the object code in, or embodied in, a physical product (including a physical distribution medium), accompanied by a written offer, valid for at least three years and valid for as long as you offer spare parts or customer support for that product model, to give anyone who possesses the object code either (1) a copy of the Corresponding Source for all the software in the product that is covered by this License, on a durable physical medium customarily used for software interchange, for a price no more than your reasonable cost of physically performing this conveying of source, or (2) access to copy the Corresponding Source from a network server at no charge.
- c) Convey individual copies of the object code with a copy of the written offer to provide the Corresponding Source. This alternative is allowed only occasionally and noncommercially, and only if you received the object code with such an offer, in accord with subsection 6b.
- d) Convey the object code by offering access from a designated place (gratis or for a charge), and offer equivalent access to the Corresponding Source in the same way through the same place at no further charge. You need not require recipients to copy the Corresponding Source along with the object code. If the place to copy the object code is a network server, the Corresponding Source may be on a different server (operated by you or a third party) that supports equivalent copying facilities, provided you maintain clear directions next to the object code saying where to find the Corresponding Source. Regardless of what server hosts the Corresponding Source, you remain obligated to ensure that it is available for as long as needed to satisfy these requirements.
- e) Convey the object code using peer-to-peer transmission, provided you inform other peers where the object code and Corresponding Source of the work are being offered to the general public at no charge under subsection 6d.

A separable portion of the object code, whose source code is excluded from the Corresponding Source as a System Library, need not be included in conveying the object code work.

A "User Product" is either (1) a "consumer product", which means any tangible personal property which is normally used for personal, family, or household purposes, or (2) anything designed or sold for incorporation into a dwelling. In determining whether a product is a consumer product, doubtful cases shall be resolved in favor of coverage. For a particular product received by a particular user, "normally used" refers to a typical or common use of that class of product, regardless of the status of the particular user or of the way in which the particular user actually uses, or expects or is expected to use, the product. A product is a consumer product regardless of whether the product has substantial commercial,

industrial or non-consumer uses, unless such uses represent the only significant mode of use of the product.

"Installation Information" for a User Product means any methods, procedures, authorization keys, or other information required to install and execute modified versions of a covered work in that User Product from a modified version of its Corresponding Source. The information must suffice to ensure that the continued functioning of the modified object code is in no case prevented or interfered with solely because modification has been made.

If you convey an object code work under this section in, or with, or specifically for use in, a User Product, and the conveying occurs as part of a transaction in which the right of possession and use of the User Product is transferred to the recipient in perpetuity or for a fixed term (regardless of how the transaction is characterized), the Corresponding Source conveyed under this section must be accompanied by the Installation Information. But this requirement does not apply if neither you nor any third party retains the ability to install modified object code on the User Product (for example, the work has been installed in ROM).

The requirement to provide Installation Information does not include a requirement to continue to provide support service, warranty, or updates for a work that has been modified or installed by the recipient, or for the User Product in which it has been modified or installed. Access to a network may be denied when the modification itself materially and adversely affects the operation of the network or violates the rules and protocols for communication across the network.

Corresponding Source conveyed, and Installation Information provided, in accord with this section must be in a format that is publicly documented (and with an implementation available to the public in source code form), and must require no special password or key for unpacking, reading or copying.

#### 7. Additional Terms.

"Additional permissions" are terms that supplement the terms of this License by making exceptions from one or more of its conditions. Additional permissions that are applicable to the entire Program shall be treated as though they were included in this License, to the extent that they are valid under applicable law. If additional permissions apply only to part of the Program, that part may be used separately under those permissions, but the entire Program remains governed by this License without regard to the additional permissions.

When you convey a copy of a covered work, you may at your option remove any additional permissions from that copy, or from any part of it. (Additional permissions may be written to require their own removal in certain cases when you modify the work.) You may place additional permissions on material, added by you to a covered work, for which you have or can give appropriate copyright permission.

Notwithstanding any other provision of this License, for material you add to a covered work, you may (if authorized by the copyright holders of that material) supplement the terms of this License with terms:

a) Disclaiming warranty or limiting liability differently from the terms of sections 15 and 16 of this License; or

- b) Requiring preservation of specified reasonable legal notices or author attributions in that material or in the Appropriate Legal Notices displayed by works containing it; or
- c) Prohibiting misrepresentation of the origin of that material, or requiring that modified versions of such material be marked in reasonable ways as different from the original version; or
- d) Limiting the use for publicity purposes of names of licensors or authors of the material; or
- e) Declining to grant rights under trademark law for use of some trade names, trademarks, or service marks; or
- f) Requiring indemnification of licensors and authors of that material by anyone who conveys the material (or modified versions of it) with contractual assumptions of liability to the recipient, for any liability that these contractual assumptions directly impose on those licensors and authors.

All other non-permissive additional terms are considered "further restrictions" within the meaning of section 10. If the Program as you received it, or any part of it, contains a notice stating that it is governed by this License along with a term that is a further restriction, you may remove that term. If a license document contains a further restriction but permits relicensing or conveying under this License, you may add to a covered work material governed by the terms of that license document, provided that the further restriction does not survive such relicensing or conveying.

If you add terms to a covered work in accord with this section, you must place, in the relevant source files, a statement of the additional terms that apply to those files, or a notice indicating where to find the applicable terms.

Additional terms, permissive or non-permissive, may be stated in the form of a separately written license, or stated as exceptions; the above requirements apply either way.

#### 8. Termination.

You may not propagate or modify a covered work except as expressly provided under this License. Any attempt otherwise to propagate or modify it is void, and will automatically terminate your rights under this License (including any patent licenses granted under the third paragraph of section 11).

However, if you cease all violation of this License, then your license from a particular copyright holder is reinstated (a) provisionally, unless and until the copyright holder explicitly and finally terminates your license, and (b) permanently, if the copyright holder fails to notify you of the violation by some reasonable means prior to 60 days after the cessation.

Moreover, your license from a particular copyright holder is reinstated permanently if the copyright holder notifies you of the violation by some reasonable means, this is the first time you have received notice of violation of this License (for any work) from that copyright holder, and you cure the violation prior to 30 days after your receipt of the notice.

Termination of your rights under this section does not terminate the licenses of parties who have received copies or rights from you under this License. If your

rights have been terminated and not permanently reinstated, you do not qualify to receive new licenses for the same material under section 10.

#### 9. Acceptance Not Required for Having Copies.

You are not required to accept this License in order to receive or run a copy of the Program. Ancillary propagation of a covered work occurring solely as a consequence of using peer-to-peer transmission to receive a copy likewise does not require acceptance. However, nothing other than this License grants you permission to propagate or modify any covered work. These actions infringe copyright if you do not accept this License. Therefore, by modifying or propagating a covered work, you indicate your acceptance of this License to do so.

#### 10. Automatic Licensing of Downstream Recipients.

Each time you convey a covered work, the recipient automatically receives a license from the original licensors, to run, modify and propagate that work, subject to this License. You are not responsible for enforcing compliance by third parties with this License.

An "entity transaction" is a transaction transferring control of an organization, or substantially all assets of one, or subdividing an organization, or merging organizations. If propagation of a covered work results from an entity transaction, each party to that transaction who receives a copy of the work also receives whatever licenses to the work the party's predecessor in interest had or could give under the previous paragraph, plus a right to possession of the Corresponding Source of the work from the predecessor in interest, if the predecessor has it or can get it with reasonable efforts.

You may not impose any further restrictions on the exercise of the rights granted or affirmed under this License. For example, you may not impose a license fee, royalty, or other charge for exercise of rights granted under this License, and you may not initiate litigation (including a cross-claim or counterclaim in a lawsuit) alleging that any patent claim is infringed by making, using, selling, offering for sale, or importing the Program or any portion of it.

#### 11. Patents.

A "contributor" is a copyright holder who authorizes use under this License of the Program or a work on which the Program is based. The work thus licensed is called the contributor's "contributor version".

A contributor's "essential patent claims" are all patent claims owned or controlled by the contributor, whether already acquired or hereafter acquired, that would be infringed by some manner, permitted by this License, of making, using, or selling its contributor version, but do not include claims that would be infringed only as a consequence of further modification of the contributor version. For purposes of this definition, "control" includes the right to grant patent sublicenses in a manner consistent with the requirements of this License.

Each contributor grants you a non-exclusive, worldwide, royalty-free patent license under the contributor's essential patent claims, to make, use, sell, offer for sale, import and otherwise run, modify and propagate the contents of its contributor version.

In the following three paragraphs, a "patent license" is any express agreement or commitment, however denominated, not to enforce a patent (such as an express



permission to practice a patent or covenant not to sue for patent infringement). To "grant" such a patent license to a party means to make such an agreement or commitment not to enforce a patent against the party.

If you convey a covered work, knowingly relying on a patent license, and the Corresponding Source of the work is not available for anyone to copy, free of charge and under the terms of this License, through a publicly available network server or other readily accessible means, then you must either (1) cause the Corresponding Source to be so available, or (2) arrange to deprive yourself of the benefit of the patent license for this particular work, or (3) arrange, in a manner consistent with the requirements of this License, to extend the patent license to downstream recipients. "Knowingly relying" means you have actual knowledge that, but for the patent license, your conveying the covered work in a country, or your recipient's use of the covered work in a country, would infringe one or more identifiable patents in that country that you have reason to believe are valid.

If, pursuant to or in connection with a single transaction or arrangement, you convey, or propagate by procuring conveyance of, a covered work, and grant a patent license to some of the parties receiving the covered work authorizing them to use, propagate, modify or convey a specific copy of the covered work, then the patent license you grant is automatically extended to all recipients of the covered work and works based on it.

A patent license is "discriminatory" if it does not include within the scope of its coverage, prohibits the exercise of, or is conditioned on the non-exercise of one or more of the rights that are specifically granted under this License. You may not convey a covered work if you are a party to an arrangement with a third party that is in the business of distributing software, under which you make payment to the third party based on the extent of your activity of conveying the work, and under which the third party grants, to any of the parties who would receive the covered work from you, a discriminatory patent license (a) in connection with copies of the covered work conveyed by you (or copies made from those copies), or (b) primarily for and in connection with specific products or compilations that contain the covered work, unless you entered into that arrangement, or that patent license was granted, prior to 28 March 2007.

Nothing in this License shall be construed as excluding or limiting any implied license or other defenses to infringement that may otherwise be available to you under applicable patent law.

#### 12. No Surrender of Others' Freedom.

If conditions are imposed on you (whether by court order, agreement or otherwise) that contradict the conditions of this License, they do not excuse you from the conditions of this License. If you cannot convey a covered work so as to satisfy simultaneously your obligations under this License and any other pertinent obligations, then as a consequence you may not convey it at all. For example, if you agree to terms that obligate you to collect a royalty for further conveying from those to whom you convey the Program, the only way you could satisfy both those terms and this License would be to refrain entirely from conveying the Program.

#### 13. Use with the GNU Affero General Public License.

Notwithstanding any other provision of this License, you have permission to link or combine any covered work with a work licensed under version 3 of the GNU

Affero General Public License into a single combined work, and to convey the resulting work. The terms of this License will continue to apply to the part which is the covered work, but the special requirements of the GNU Affero General Public License, section 13, concerning interaction through a network will apply to the combination as such.

#### 14. Revised Versions of this License.

The Free Software Foundation may publish revised and/or new versions of the GNU General Public License from time to time. Such new versions will be similar in spirit to the present version, but may differ in detail to address new problems or concerns.

Each version is given a distinguishing version number. If the Program specifies that a certain numbered version of the GNU General Public License "or any later version" applies to it, you have the option of following the terms and conditions either of that numbered version or of any later version published by the Free Software Foundation. If the Program does not specify a version number of the GNU General Public License, you may choose any version ever published by the Free Software Foundation.

If the Program specifies that a proxy can decide which future versions of the GNU General Public License can be used, that proxy's public statement of acceptance of a version permanently authorizes you to choose that version for the Program.

Later license versions may give you additional or different permissions. However, no additional obligations are imposed on any author or copyright holder as a result of your choosing to follow a later version.

#### 15. Disclaimer of Warranty.

THERE IS NO WARRANTY FOR THE PROGRAM, TO THE EXTENT PERMITTED BY APPLICABLE LAW. EXCEPT WHEN OTHERWISE STATED IN WRITING THE COPYRIGHT HOLDERS AND/OR OTHER PARTIES PROVIDE THE PROGRAM "AS IS" WITHOUT WARRANTY OF ANY KIND, EITHER EXPRESSED OR IMPLIED, INCLUDING, BUT NOT LIMITED TO, THE IMPLIED WARRANTIES OF MERCHANTABILITY AND FITNESS FOR A PARTICULAR PURPOSE. THE ENTIRE RISK AS TO THE QUALITY AND PERFORMANCE OF THE PROGRAM IS WITH YOU. SHOULD THE PROGRAM PROVE DEFECTIVE, YOU ASSUME THE COST OF ALL NECESSARY SERVICING, REPAIR OR CORRECTION.

#### 16. Limitation of Liability.

IN NO EVENT UNLESS REQUIRED BY APPLICABLE LAW OR AGREED TO IN WRITING WILL ANY COPYRIGHT HOLDER, OR ANY OTHER PARTY WHO MODIFIES AND/OR CONVEYS THE PROGRAM AS PERMITTED ABOVE, BE LIABLE TO YOU FOR DAMAGES, INCLUDING ANY GENERAL, SPECIAL, INCIDENTAL OR CONSEQUENTIAL DAMAGES ARISING OUT OF THE USE OR INABILITY TO USE THE PROGRAM (INCLUDING BUT NOT LIMITED TO LOSS OF DATA OR DATA BEING RENDERED INACCURATE OR LOSSES SUSTAINED BY YOU OR THIRD PARTIES OR A FAILURE OF THE PROGRAM TO OPERATE WITH ANY OTHER PROGRAMS), EVEN IF SUCH HOLDER OR OTHER PARTY HAS BEEN ADVISED OF THE POSSIBILITY OF SUCH DAMAGES.

#### 17. Interpretation of Sections 15 and 16.

If the disclaimer of warranty and limitation of liability provided above cannot be given local legal effect according to their terms, reviewing courts shall apply local law that most closely approximates an absolute waiver of all civil liability in connection with the Program, unless a warranty or assumption of liability accompanies a copy of the Program in return for a fee.

END OF TERMS AND CONDITIONS



## 6.2 GNU GENERAL PUBLIC LICENSE

Version 2, June 1991

Copyright (C) 1989, 1991 Free Software Foundation, Inc., 51 Franklin Street, Fifth Floor, Boston, MA 02110-1301 USA

Everyone is permitted to copy and distribute verbatim copies of this license document, but changing it is not allowed.

### 6.2.1 Preamble

The licenses for most software are designed to take away your freedom to share and change it. By contrast, the GNU General Public License is intended to guarantee your freedom to share and change free software--to make sure the software is free for all its users. This General Public License applies to most of the Free Software Foundation's software and to any other program whose authors commit to using it. (Some other Free Software Foundation software is covered by the GNU Lesser General Public License instead.) You can apply it to your programs, too.

When we speak of free software, we are referring to freedom, not price. Our General Public Licenses are designed to make sure that you have the freedom to distribute copies of free software (and charge for this service if you wish), that you receive source code or can get it if you want it, that you can change the software or use pieces of it in new free programs; and that you know you can do these things.

To protect your rights, we need to make restrictions that forbid anyone to deny you these rights or to ask you to surrender the rights. These restrictions translate to certain responsibilities for you if you distribute copies of the software, or if you modify it.

For example, if you distribute copies of such a program, whether gratis or for a fee, you must give the recipients all the rights that you have. You must make sure that they, too, receive or can get the source code. And you must show them these terms so they know their rights.

We protect your rights with two steps: (1) copyright the software, and (2) offer you this license which gives you legal permission to copy, distribute and/or modify the software.

Also, for each author's protection and ours, we want to make certain that everyone understands that there is no warranty for this free software. If the software is modified by someone else and passed on, we want its recipients to know that what they have is not the original, so that any problems introduced by others will not reflect on the original authors' reputations.

Finally, any free program is threatened constantly by software patents. We wish to avoid the danger that redistributors of a free program will individually obtain patent licenses, in effect making the program proprietary. To prevent this, we have made it clear that any patent must be licensed for everyone's free use or not licensed at all.

The precise terms and conditions for copying, distribution and modification follow.

## 6.2.2 GNU GENERAL PUBLIC LICENSE: TERMS AND CONDITIONS FOR COPYING, DISTRIBUTION AND MODIFICATION

0. This License applies to any program or other work which contains a notice placed by the copyright holder saying it may be distributed under the terms of this General Public License. The "Program", below, refers to any such program or work, and a "work based on the Program" means either the Program or any derivative work under copyright law: that is to say, a work containing the Program or a portion of it, either verbatim or with modifications and/or translated into another language. (Hereinafter, translation is included without limitation in the term "modification".) Each licensee is addressed as "you".

Activities other than copying, distribution and modification are not covered by this License; they are outside its scope. The act of running the Program is not restricted, and the output from the Program is covered only if its contents constitute a work based on the Program (independent of having been made by running the Program). Whether that is true depends on what the Program does.

1. You may copy and distribute verbatim copies of the Program's source code as you receive it, in any medium, provided that you conspicuously and appropriately publish on each copy an appropriate copyright notice and disclaimer of warranty; keep intact all the notices that refer to this License and to the absence of any warranty; and give any other recipients of the Program a copy of this License along with the Program.

You may charge a fee for the physical act of transferring a copy, and you may at your option offer warranty protection in exchange for a fee.

2. You may modify your copy or copies of the Program or any portion of it, thus forming a work based on the Program, and copy and distribute such modifications or work under the terms of Section 1 above, provided that you also meet all of these conditions:

a) You must cause the modified files to carry prominent notices stating that you changed the files and the date of any change.

b) You must cause any work that you distribute or publish, that in whole or in part contains or is derived from the Program or any part thereof, to be licensed as a whole at no charge to all third parties under the terms of this License.

c) If the modified program normally reads commands interactively when run, you must cause it, when started running for such interactive use in the most ordinary way, to print or display an announcement including an appropriate copyright notice and a notice that there is no warranty (or else, saying that you provide a warranty) and that users may redistribute the program under these conditions, and telling the user how to view a copy of this License. (Exception: if the Program itself is interactive but does not normally print such an announcement, your work based on the Program is not required to print an announcement.)

These requirements apply to the modified work as a whole. If identifiable sections of that work are not derived from the Program, and can be reasonably considered independent and separate works in themselves, then this License, and its terms, do not apply to those sections when you distribute them as separate works. But

when you distribute the same sections as part of a whole which is a work based on the Program, the distribution of the whole must be on the terms of this License, whose permissions for other licensees extend to the entire whole, and thus to each and every part regardless of who wrote it.

Thus, it is not the intent of this section to claim rights or contest your rights to work written entirely by you; rather, the intent is to exercise the right to control the distribution of derivative or collective works based on the Program.

In addition, mere aggregation of another work not based on the Program with the Program (or with a work based on the Program) on a volume of a storage or distribution medium does not bring the other work under the scope of this License.

3. You may copy and distribute the Program (or a work based on it, under Section 2) in object code or executable form under the terms of Sections 1 and 2 above provided that you also do one of the following:

- a) Accompany it with the complete corresponding machine-readable source code, which must be distributed under the terms of Sections 1 and 2 above on a medium customarily used for software interchange; or,
- b) Accompany it with a written offer, valid for at least three years, to give any third party, for a charge no more than your cost of physically performing source distribution, a complete machine-readable copy of the corresponding source code, to be distributed under the terms of Sections 1 and 2 above on a medium customarily used for software interchange; or,
- c) Accompany it with the information you received as to the offer to distribute corresponding source code. (This alternative is allowed only for noncommercial distribution and only if you received the program in object code or executable form with such an offer, in accord with Subsection b above.)

The source code for a work means the preferred form of the work for making modifications to it. For an executable work, complete source code means all the source code for all modules it contains, plus any associated interface definition files, plus the scripts used to control compilation and installation of the executable. However, as a special exception, the source code distributed need not include anything that is normally distributed (in either source or binary form) with the major components (compiler, kernel, and so on) of the operating system on which the executable runs, unless that component itself accompanies the executable.

If distribution of executable or object code is made by offering access to copy from a designated place, then offering equivalent access to copy the source code from the same place counts as distribution of the source code, even though third parties are not compelled to copy the source along with the object code.

4. You may not copy, modify, sublicense, or distribute the Program except as expressly provided under this License. Any attempt otherwise to copy, modify, sublicense or distribute the Program is void, and will automatically terminate your rights under this License. However, parties who have received copies, or rights, from you under this License will not have their licenses terminated so long as such parties remain in full compliance.

5. You are not required to accept this License, since you have not signed it. However, nothing else grants you permission to modify or distribute the Program or its derivative works. These actions are prohibited by law if you do not accept this License. Therefore, by modifying or distributing the Program (or any work

based on the Program), you indicate your acceptance of this License to do so, and all its terms and conditions for copying, distributing or modifying the Program or works based on it.

6. Each time you redistribute the Program (or any work based on the Program), the recipient automatically receives a license from the original licensor to copy, distribute or modify the Program subject to these terms and conditions. You may not impose any further restrictions on the recipients' exercise of the rights granted herein. You are not responsible for enforcing compliance by third parties to this License.

7. If, as a consequence of a court judgment or allegation of patent infringement or for any other reason (not limited to patent issues), conditions are imposed on you (whether by court order, agreement or otherwise) that contradict the conditions of this License, they do not excuse you from the conditions of this License. If you cannot distribute so as to satisfy simultaneously your obligations under this License and any other pertinent obligations, then as a consequence you may not distribute the Program at all. For example, if a patent license would not permit royalty-free redistribution of the Program by all those who receive copies directly or indirectly through you, then the only way you could satisfy both it and this License would be to refrain entirely from distribution of the Program.

If any portion of this section is held invalid or unenforceable under any particular circumstance, the balance of the section is intended to apply and the section as a whole is intended to apply in other circumstances.

It is not the purpose of this section to induce you to infringe any patents or other property right claims or to contest validity of any such claims; this section has the sole purpose of protecting the integrity of the free software distribution system, which is implemented by public license practices. Many people have made generous contributions to the wide range of software distributed through that system in reliance on consistent application of that system; it is up to the author/donor to decide if he or she is willing to distribute software through any other system and a licensee cannot impose that choice.

This section is intended to make thoroughly clear what is believed to be a consequence of the rest of this License.

8. If the distribution and/or use of the Program is restricted in certain countries either by patents or by copyrighted interfaces, the original copyright holder who places the Program under this License may add an explicit geographical distribution limitation excluding those countries, so that distribution is permitted only in or among countries not thus excluded. In such case, this License incorporates the limitation as if written in the body of this License.

9. The Free Software Foundation may publish revised and/or new versions of the General Public License from time to time. Such new versions will be similar in spirit to the present version, but may differ in detail to address new problems or concerns.

Each version is given a distinguishing version number. If the Program specifies a version number of this License which applies to it and "any later version", you have the option of following the terms and conditions either of that version or of any later version published by the Free Software Foundation. If the Program does not specify a version number of this License, you may choose any version ever published by the Free Software Foundation.



10. If you wish to incorporate parts of the Program into other free programs whose distribution conditions are different, write to the author to ask for permission. For software which is copyrighted by the Free Software Foundation, write to the Free Software Foundation; we sometimes make exceptions for this. Our decision will be guided by the two goals of preserving the free status of all derivatives of our free software and of promoting the sharing and reuse of software generally.

### 6.2.3 NO WARRANTY

11. BECAUSE THE PROGRAM IS LICENSED FREE OF CHARGE, THERE IS NO WARRANTY FOR THE PROGRAM, TO THE EXTENT PERMITTED BY APPLICABLE LAW. EXCEPT WHEN OTHERWISE STATED IN WRITING THE COPYRIGHT HOLDERS AND/OR OTHER PARTIES PROVIDE THE PROGRAM "AS IS" WITHOUT WARRANTY OF ANY KIND, EITHER EXPRESSED OR IMPLIED, INCLUDING, BUT NOT LIMITED TO, THE IMPLIED WARRANTIES OF MERCHANTABILITY AND FITNESS FOR A PARTICULAR PURPOSE. THE ENTIRE RISK AS TO THE QUALITY AND PERFORMANCE OF THE PROGRAM IS WITH YOU. SHOULD THE PROGRAM PROVE DEFECTIVE, YOU ASSUME THE COST OF ALL NECESSARY SERVICING, REPAIR OR CORRECTION.

12. IN NO EVENT UNLESS REQUIRED BY APPLICABLE LAW OR AGREED TO IN WRITING WILL ANY COPYRIGHT HOLDER, OR ANY OTHER PARTY WHO MAY MODIFY AND/OR REDISTRIBUTE THE PROGRAM AS PERMITTED ABOVE, BE LIABLE TO YOU FOR DAMAGES, INCLUDING ANY GENERAL, SPECIAL, INCIDENTAL OR CONSEQUENTIAL DAMAGES ARISING OUT OF THE USE OR INABILITY TO USE THE PROGRAM (INCLUDING BUT NOT LIMITED TO LOSS OF DATA OR DATA BEING RENDERED INACCURATE OR LOSSES SUSTAINED BY YOU OR THIRD PARTIES OR A FAILURE OF THE PROGRAM TO OPERATE WITH ANY OTHER PROGRAMS), EVEN IF SUCH HOLDER OR OTHER PARTY HAS BEEN ADVISED OF THE POSSIBILITY OF SUCH DAMAGES.

END OF TERMS AND CONDITIONS



## 6.3 GNU LESSER GENERAL PUBLIC LICENSE

Version 2.1, February 1999

Copyright (C) 1991, 1999 Free Software Foundation, Inc. 51 Franklin Street, Fifth Floor, Boston, MA 02110-1301 USA Everyone is permitted to copy and distribute verbatim copies of this license document, but changing it is not allowed.

[This is the first released version of the Lesser GPL. It also counts as the successor of the GNU Library Public License, version 2, hence the version number 2.1.]

### 6.3.1 Preamble

The licenses for most software are designed to take away your freedom to share and change it. By contrast, the GNU General Public Licenses are intended to guarantee your freedom to share and change free software--to make sure the software is free for all its users.

This license, the Lesser General Public License, applies to some specially designated software packages--typically libraries--of the Free Software Foundation and other authors who decide to use it. You can use it too, but we suggest you first think carefully about whether this license or the ordinary General Public License is the better strategy to use in any particular case, based on the explanations below.

When we speak of free software, we are referring to freedom of use, not price. Our General Public Licenses are designed to make sure that you have the freedom to distribute copies of free software (and charge for this service if you wish); that you receive source code or can get it if you want it; that you can change the software and use pieces of it in new free programs; and that you are informed that you can do these things.

To protect your rights, we need to make restrictions that forbid distributors to deny you these rights or to ask you to surrender these rights. These restrictions translate to certain responsibilities for you if you distribute copies of the library or if you modify it.

For example, if you distribute copies of the library, whether gratis or for a fee, you must give the recipients all the rights that we gave you. You must make sure that they, too, receive or can get the source code. If you link other code with the library, you must provide complete object files to the recipients, so that they can relink them with the library after making changes to the library and recompiling it. And you must show them these terms so they know their rights.

We protect your rights with a two-step method: (1) we copyright the library, and (2) we offer you this license, which gives you legal permission to copy, distribute and/or modify the library.

To protect each distributor, we want to make it very clear that there is no warranty for the free library. Also, if the library is modified by someone else and passed on, the recipients should know that what they have is not the original version, so that

the original author's reputation will not be affected by problems that might be introduced by others.

Finally, software patents pose a constant threat to the existence of any free program. We wish to make sure that a company cannot effectively restrict the users of a free program by obtaining a restrictive license from a patent holder. Therefore, we insist that any patent license obtained for a version of the library must be consistent with the full freedom of use specified in this license.

Most GNU software, including some libraries, is covered by the ordinary GNU General Public License. This license, the GNU Lesser General Public License, applies to certain designated libraries, and is quite different from the ordinary General Public License. We use this license for certain libraries in order to permit linking those libraries into non-free programs.

When a program is linked with a library, whether statically or using a shared library, the combination of the two is legally speaking a combined work, a derivative of the original library. The ordinary General Public License therefore permits such linking only if the entire combination fits its criteria of freedom. The Lesser General Public License permits more lax criteria for linking other code with the library.

We call this license the "Lesser" General Public License because it does Less to protect the user's freedom than the ordinary General Public License. It also provides other free software developers Less of an advantage over competing non-free programs. These disadvantages are the reason we use the ordinary General Public License for many libraries. However, the Lesser license provides advantages in certain special circumstances.

For example, on rare occasions, there may be a special need to encourage the widest possible use of a certain library, so that it becomes a de-facto standard. To achieve this, non-free programs must be allowed to use the library. A more frequent case is that a free library does the same job as widely used non-free libraries. In this case, there is little to gain by limiting the free library to free software only, so we use the Lesser General Public License.

In other cases, permission to use a particular library in non-free programs enables a greater number of people to use a large body of free software. For example, permission to use the GNU C Library in non-free programs enables many more people to use the whole GNU operating system, as well as its variant, the GNU/Linux operating system.

Although the Lesser General Public License is Less protective of the users' freedom, it does ensure that the user of a program that is linked with the Library has the freedom and the wherewithal to run that program using a modified version of the Library.

The precise terms and conditions for copying, distribution and modification follow. Pay close attention to the difference between a "work based on the library" and a "work that uses the library". The former contains code derived from the library, whereas the latter must be combined with the library in order to run.

## 6.3.2 GNU LESSER GENERAL PUBLIC LICENSE

### TERMS AND CONDITIONS FOR COPYING, DISTRIBUTION AND MODIFICATION

0. This License Agreement applies to any software library or other program which contains a notice placed by the copyright holder or other authorized party saying it may be distributed under the terms of this Lesser General Public License (also called "this License"). Each licensee is addressed as "you".

A "library" means a collection of software functions and/or data prepared so as to be conveniently linked with application programs (which use some of those functions and data) to form executables.

The "Library", below, refers to any such software library or work which has been distributed under these terms. A "work based on the Library" means either the Library or any derivative work under copyright law: that is to say, a work containing the Library or a portion of it, either verbatim or with modifications and/or translated straightforwardly into another language. (Hereinafter, translation is included without limitation in the term "modification".)

"Source code" for a work means the preferred form of the work for making modifications to it. For a library, complete source code means all the source code for all modules it contains, plus any associated interface definition files, plus the scripts used to control compilation and installation of the library.

Activities other than copying, distribution and modification are not covered by this License; they are outside its scope. The act of running a program using the Library is not restricted, and output from such a program is covered only if its contents constitute a work based on the Library (independent of the use of the Library in a tool for writing it). Whether that is true depends on what the Library does and what the program that uses the Library does.

1. You may copy and distribute verbatim copies of the Library's complete source code as you receive it, in any medium, provided that you conspicuously and appropriately publish on each copy an appropriate copyright notice and disclaimer of warranty; keep intact all the notices that refer to this License and to the absence of any warranty; and distribute a copy of this License along with the Library.

You may charge a fee for the physical act of transferring a copy, and you may at your option offer warranty protection in exchange for a fee.

2. You may modify your copy or copies of the Library or any portion of it, thus forming a work based on the Library, and copy and distribute such modifications or work under the terms of Section 1 above, provided that you also meet all of these conditions:

- a) The modified work must itself be a software library.
- b) You must cause the files modified to carry prominent notices stating that you changed the files and the date of any change.
- c) You must cause the whole of the work to be licensed at no charge to all third parties under the terms of this License.

d) If a facility in the modified Library refers to a function or a table of data to be supplied by an application program that uses the facility, other than as an argument passed when the facility

is invoked, then you must make a good faith effort to ensure that, in the event an application does not supply such function or table, the facility still operates, and performs whatever part of its purpose remains meaningful.

(For example, a function in a library to compute square roots has a purpose that is entirely well-defined independent of the application. Therefore, Subsection 2d requires that any application-supplied function or table used by this function must be optional: if the application does not supply it, the square root function must still compute square roots.)

These requirements apply to the modified work as a whole. If identifiable sections of that work are not derived from the Library, and can be reasonably considered independent and separate works in themselves, then this License, and its terms, do not apply to those sections when you distribute them as separate works. But when you distribute the same sections as part of a whole which is a work based on the Library, the distribution of the whole must be on the terms of this License, whose permissions for other licensees extend to the entire whole, and thus to each and every part regardless of who wrote it.

Thus, it is not the intent of this section to claim rights or contest your rights to work written entirely by you; rather, the intent is to exercise the right to control the distribution of derivative or collective works based on the Library.

In addition, mere aggregation of another work not based on the Library with the Library (or with a work based on the Library) on a volume of a storage or distribution medium does not bring the other work under the scope of this License.

3. You may opt to apply the terms of the ordinary GNU General Public License instead of this License to a given copy of the Library. To do this, you must alter all the notices that refer to this License, so that they refer to the ordinary GNU General Public License, version 2, instead of to this License. (If a newer version than version 2 of the ordinary GNU General Public License has appeared, then you can specify that version instead if you wish.) Do not make any other change in these notices.

Once this change is made in a given copy, it is irreversible for that copy, so the ordinary GNU General Public License applies to all subsequent copies and derivative works made from that copy.

This option is useful when you wish to copy part of the code of the Library into a program that is not a library.

4. You may copy and distribute the Library (or a portion or derivative of it, under Section 2) in object code or executable form under the terms of Sections 1 and 2 above provided that you accompany it with the complete corresponding machine-readable source code, which must be distributed under the terms of Sections 1 and 2 above on a medium customarily used for software interchange.

If distribution of object code is made by offering access to copy from a designated place, then offering equivalent access to copy the source code from the same place satisfies the requirement to distribute the source code, even though third parties are not compelled to copy the source along with the object code.

5. A program that contains no derivative of any portion of the Library, but is designed to work with the Library by being compiled or linked with it, is called a "work that uses the Library". Such a work, in isolation, is not a derivative work of the Library, and therefore falls outside the scope of this License.

However, linking a "work that uses the Library" with the Library creates an executable that is a derivative of the Library (because it contains portions of the Library), rather than a "work that uses the library". The executable is therefore covered by this License. Section 6 states terms for distribution of such executables.

When a "work that uses the Library" uses material from a header file that is part of the Library, the object code for the work may be a derivative work of the Library even though the source code is not.

Whether this is true is especially significant if the work can be linked without the Library, or if the work is itself a library. The threshold for this to be true is not precisely defined by law.

If such an object file uses only numerical parameters, data structure layouts and accessors, and small macros and small inline functions (ten lines or less in length), then the use of the object file is unrestricted, regardless of whether it is legally a derivative work. (Executables containing this object code plus portions of the Library will still fall under Section 6.)

Otherwise, if the work is a derivative of the Library, you may distribute the object code for the work under the terms of Section 6. Any executables containing that work also fall under Section 6, whether or not they are linked directly with the Library itself.

6. As an exception to the Sections above, you may also combine or link a "work that uses the Library" with the Library to produce a work containing portions of the Library, and distribute that work under terms of your choice, provided that the terms permit modification of the work for the customer's own use and reverse engineering for debugging such modifications.

You must give prominent notice with each copy of the work that the Library is used in it and that the Library and its use are covered by this License. You must supply a copy of this License. If the work during execution displays copyright notices, you must include the copyright notice for the Library among them, as well as a reference directing the user to the copy of this License. Also, you must do one of these things:

a) Accompany the work with the complete corresponding machine-readable source code for the Library including whatever changes were used in the work (which must be distributed under Sections 1 and 2 above); and, if the work is an executable linked with the Library, with the complete machine-readable "work that uses the Library", as object code and/or source code, so that the user can modify the Library and then relink to produce a modified executable containing the modified Library. (It is understood that the user who changes the contents of definitions files in the Library will not necessarily be able to recompile the application to use the modified definitions.)

b) Use a suitable shared library mechanism for linking with the Library. A suitable mechanism is one that (1) uses at run time a copy of the library already present on the user's computer system, rather than copying library functions into the executable, and (2) will operate properly with a modified version of the library, if

the user installs one, as long as the modified version is interface-compatible with the version that the work was made with.

- c) Accompany the work with a written offer, valid for at least three years, to give the same user the materials specified in Subsection 6a, above, for a charge no more than the cost of performing this distribution.
- d) If distribution of the work is made by offering access to copy from a designated place, offer equivalent access to copy the above specified materials from the same place.
- e) Verify that the user has already received a copy of these materials or that you have already sent this user a copy.

For an executable, the required form of the "work that uses the Library" must include any data and utility programs needed for reproducing the executable from it. However, as a special exception, the materials to be distributed need not include anything that is normally distributed (in either source or binary form) with the major components (compiler, kernel, and so on) of the operating system on which the executable runs, unless that component itself accompanies the executable.

It may happen that this requirement contradicts the license restrictions of other proprietary libraries that do not normally accompany the operating system. Such a contradiction means you cannot use both them and the Library together in an executable that you distribute.

7. You may place library facilities that are a work based on the Library side-by-side in a single library together with other library facilities not covered by this License, and distribute such a combined library, provided that the separate distribution of the work based on the Library and of the other library facilities is otherwise permitted, and provided that you do these two things:

- a) Accompany the combined library with a copy of the same work based on the Library, uncombined with any other library facilities. This must be distributed under the terms of the Sections above.
- b) Give prominent notice with the combined library of the fact that part of it is a work based on the Library, and explaining where to find the accompanying uncombined form of the same work.

8. You may not copy, modify, sublicense, link with, or distribute the Library except as expressly provided under this License. Any attempt otherwise to copy, modify, sublicense, link with, or distribute the Library is void, and will automatically terminate your rights under this License. However, parties who have received copies, or rights, from you under this License will not have their licenses terminated so long as such parties remain in full compliance.

9. You are not required to accept this License, since you have not signed it. However, nothing else grants you permission to modify or distribute the Library or its derivative works. These actions are prohibited by law if you do not accept this License. Therefore, by modifying or distributing the Library (or any work based on the Library), you indicate your acceptance of this License to do so, and all its terms and conditions for copying, distributing or modifying the Library or works based on it.

10. Each time you redistribute the Library (or any work based on the Library), the recipient automatically receives a license from the original licensor to copy,



distribute, link with or modify the Library subject to these terms and conditions. You may not impose any further restrictions on the recipients' exercise of the rights granted herein. You are not responsible for enforcing compliance by third parties with this License.

11. If, as a consequence of a court judgment or allegation of patent infringement or for any other reason (not limited to patent issues), conditions are imposed on you (whether by court order, agreement or otherwise) that contradict the conditions of this License, they do not excuse you from the conditions of this License. If you cannot distribute so as to satisfy simultaneously your obligations under this License and any other pertinent obligations, then as a consequence you may not distribute the Library at all. For example, if a patent license would not permit royalty-free redistribution of the Library by all those who receive copies directly or indirectly through you, then the only way you could satisfy both it and this License would be to refrain entirely from distribution of the Library.

If any portion of this section is held invalid or unenforceable under any particular circumstance, the balance of the section is intended to apply, and the section as a whole is intended to apply in other circumstances.

It is not the purpose of this section to induce you to infringe any patents or other property right claims or to contest validity of any such claims; this section has the sole purpose of protecting the integrity of the free software distribution system which is implemented by public license practices. Many people have made generous contributions to the wide range of software distributed through that system in reliance on consistent application of that system; it is up to the author/donor to decide if he or she is willing to distribute software through any other system and a licensee cannot impose that choice.

This section is intended to make thoroughly clear what is believed to be a consequence of the rest of this License.

12. If the distribution and/or use of the Library is restricted in certain countries either by patents or by copyrighted interfaces, the original copyright holder who places the Library under this License may add an explicit geographical distribution limitation excluding those countries, so that distribution is permitted only in or among countries not thus excluded. In such case, this License incorporates the limitation as if written in the body of this License.

13. The Free Software Foundation may publish revised and/or new versions of the Lesser General Public License from time to time. Such new versions will be similar in spirit to the present version, but may differ in detail to address new problems or concerns.

Each version is given a distinguishing version number. If the Library specifies a version number of this License which applies to it and "any later version", you have the option of following the terms and conditions either of that version or of any later version published by the Free Software Foundation. If the Library does not specify a license version number, you may choose any version ever published by the Free Software Foundation.

14. If you wish to incorporate parts of the Library into other free programs whose distribution conditions are incompatible with these, write to the author to ask for permission. For software which is copyrighted by the Free Software Foundation, write to the Free Software Foundation; we sometimes make exceptions for this. Our decision will be guided by the two goals of preserving the free status of all

derivatives of our free software and of promoting the sharing and reuse of software generally.

### 6.3.3 NO WARRANTY

15. BECAUSE THE LIBRARY IS LICENSED FREE OF CHARGE, THERE IS NO WARRANTY FOR THE LIBRARY, TO THE EXTENT PERMITTED BY APPLICABLE LAW. EXCEPT WHEN OTHERWISE STATED IN WRITING THE COPYRIGHT HOLDERS AND/OR OTHER PARTIES PROVIDE THE LIBRARY "AS IS" WITHOUT WARRANTY OF ANY KIND, EITHER EXPRESSED OR IMPLIED, INCLUDING, BUT NOT LIMITED TO, THE IMPLIED WARRANTIES OF MERCHANTABILITY AND FITNESS FOR A PARTICULAR PURPOSE. THE ENTIRE RISK AS TO THE QUALITY AND PERFORMANCE OF THE LIBRARY IS WITH YOU. SHOULD THE LIBRARY PROVE DEFECTIVE, YOU ASSUME THE COST OF ALL NECESSARY SERVICING, REPAIR OR CORRECTION.

16. IN NO EVENT UNLESS REQUIRED BY APPLICABLE LAW OR AGREED TO IN WRITING WILL ANY COPYRIGHT HOLDER, OR ANY OTHER PARTY WHO MAY MODIFY AND/OR REDISTRIBUTE THE LIBRARY AS PERMITTED ABOVE, BE LIABLE TO YOU FOR DAMAGES, INCLUDING ANY GENERAL, SPECIAL, INCIDENTAL OR CONSEQUENTIAL DAMAGES ARISING OUT OF THE USE OR INABILITY TO USE THE LIBRARY (INCLUDING BUT NOT LIMITED TO LOSS OF DATA OR DATA BEING RENDERED INACCURATE OR LOSSES SUSTAINED BY YOU OR THIRD PARTIES OR A FAILURE OF THE LIBRARY TO OPERATE WITH ANY OTHER SOFTWARE), EVEN IF SUCH HOLDER OR OTHER PARTY HAS BEEN ADVISED OF THE POSSIBILITY OF SUCH DAMAGES.

END OF TERMS AND CONDITIONS

## 7 Index

Access Control .....	20
Backup.....	14
Certificate Settings.....	16
EM64T .....	3, 5
GNU General Public License Disclaimer .....	i
HOB RD VPN Customization.....	17
HOB RD VPN, HOB RD VPN Compact, HOB RD VPN NetAccess.....	17
HOB SCS SP.....	3, 5
HOB SCS VP.....	3, 11
HOB Software Section.....	16
HOBmin .....	6, 7, 8, 9, 13, 14, 16, 20, 22
HOBmin Section .....	20
License Key .....	8, 17
log level .....	22
Log Server .....	22
Logfiles .....	24
Network Card.....	6
Network Settings.....	23
Networking.....	23
NTP Server.....	22
PPP Tunnel Gateway .....	18
PPP Tunnel Server (Optional .....	19
PPP-Tunnel .....	18
Reboot and Shutdown .....	16
Services.....	22
SSH Server.....	22
Symbols and Conventions .....	i
Time Settings.....	16
Time Zone .....	7
User Administration .....	20
WebSecureProxy.....	ii, 17
x86.....	3, 5