

# HOBLink Terminal Edition

Version 5.3

HOBLink Terminal Edition - Secure Remote Access to Windows Applications



## The Secure Solution for Connectivity in Your Enterprise

HOBLink Terminal Edition is a new, modular software suite that offers your enterprise more than just terminal emulation:

- State-of-the-art, user-friendly emulation for 3270, 5250 and VT52 to VT525
- X Server for secure access (SSH encryption) to graphical UNIX environments
- HOB Enterprise Access for central administration and configuration
- HOBLink Secure for encryption of communication data
- Easy-to-use, centralized session management

HOBLink Terminal Edition is modular. That means you don't have to buy the complete package (3270, 5250, VT, HOBLink X11, HOBLink Secure HOBLink SSH and HOB Enterprise Access) but can combine the individual components as needed.

## Terminal Emulation for Modern Enterprise IT

HOBLink Terminal Edition is the ideal solution for accessing the Enterprise Server. It is optimized for use in modern systems such as Windows Vista or Windows Terminal Server. HOBLink terminal

Edition is also compatible with the encryption solution HOBLink Secure, providing you with the security you need.

## Single Point of Administration: HOB Enterprise Access

With HOB Enterprise Access, the administrator can centrally manage all users and configuration data. In order to simplify user management—especially for large installations—the users are displayed in a tree structure and can be organized in groups as needed. All user settings are transferable from the root tree to the groups and are then inherited by the users in each group. HOB Enterprise Access can be used to centrally configure and administrate more than just HOBLink Terminal Edition: it can be used with all HOB Enterprise Access products. HOB Enterprise Access thus makes it possible for you to access all important enterprise data and applications.

## User-defined GUI

Each user can set up the GUI to suit their own purposes. The keyboard, mouse buttons and keypad buttons can be assigned any characters, character strings, functions or macros. The toolbar can

be configured freely. Colors, cursor, cross-hair pointer and many other properties can be adapted as the user desires.

## Investment Protection via IPv6

HOBLink Terminal Edition supports the new Internet protocol version IPv6 and is thus prepared for use in the coming network structures.

## Central and Clear Configuration

All configuration data are managed centrally. All users can access their own configuration from any workstation, which is an important advantage for remote connections and mobile workers.

All configuration options are clearly displayed, so that administrators and users alike can make their settings simply and easily. The administrator can save any set of options as a "scheme" that can be made available to all users, specific users, or user groups. Users therefore need not be bothered with related technical details.



## Functionality Identical to HOBLink J-Term

HOBLink Terminal Edition and HOBLink J-Term, the HOB terminal emulation in Java, both have many identical functions and product design. The advantage: People working with both products (e.g. HOBLink Terminal Edition on the office workstation and HOBLink J-Term on a laptop for mobile use) and users who would like to migrate don't have to adjust to different programs and require no extra training. Another plus: both products can access the same central configuration data.

## Uniform Look and Feel

HOBLink Terminal Edition offers a uniform look and feel for all three terminal emulations. During development of the programs, intuitive, easy handling was always given a high priority.

## X Server

HOBLink X11 provides you with an X Server with HOBLink Terminal Edition. This enables you to run graphical X clients under Windows. For further information, please refer to the HOBLink X11 data sheet.

## Encryption with HOBLink Secure

HOBLink Terminal Edition can be outfitted with HOBLink Secure, an optional component that SSL-encrypts (RC2, RC4, DES, 3DES, AES) all data, bi-directionally between the host and PC. This data can also be compressed with V42.bis

technology.

## SSH Encryption

The optional HOBLink SSH component enables you to encrypt X11 or VT sessions with SSH.

## Access to Directory Services

HOBLink Terminal Edition supports the directory services most often used in enterprises. User and group profiles can be saved to LDAP servers (as of LDAP v3), under MS Active Directory Services and Novell Netware Directory Services.

## Smart Connectivity

Up to 5 different gateways or connection types can be configured for a single PC-Host connection. If the connection type with the highest priority is not available, HOBLink Terminal Edition automatically makes successive attempts to attach to the host using another configured connection type. The benefit: there is no need to modify an existing configuration over and over again.

## Graphical User Interfaces Replace “Green Screens”

To ensure a user-friendly and familiar look and feel, HOBLink Terminal Edition automatically displays 3270 and 5250 applications with a graphical user interface (GUI-on-the-fly). This function can be turned on or off as needed—even during a running session.

## Enhance Your Host Applications

With the optional HOBLink FaceLifter, you can further enhance your emulation windows. This program lets you create GUI applications that go far beyond the normal host functionality. Please refer to the product brochure for HOBLink FaceLifter for further information.



## Automatic Connection Attempts

When a connection setup is unsuccessful, HOBLINK Terminal Edition waits the configured time period and then repeats the connection attempt. The connection attempts are continued until one is successfully established.

## Data Compression

HOBLINK Terminal Edition offers run-length compression without additional compression software on the host.

Moreover, you may also optionally use HOBLINK Secure, which also offers V42. bis compression in addition to encryption. With this solution it's possible to save a considerable amount of time and money. A tab box in the program clearly displays the effective compression achieved.

## Password Encryption for Macros

Passwords used in recorded macros are encrypted. A password-protected macro can be executed only on the originator's PC – it will not run on any other machine.

## Optimized File Transfer List

The file transfer list is optimized for bi-directional transmission:

- PC - Host / Host - PC
- File transfer between sessions
- File transfer via TCP/IP FTP host

## Printing via TCP/IP without Gateway

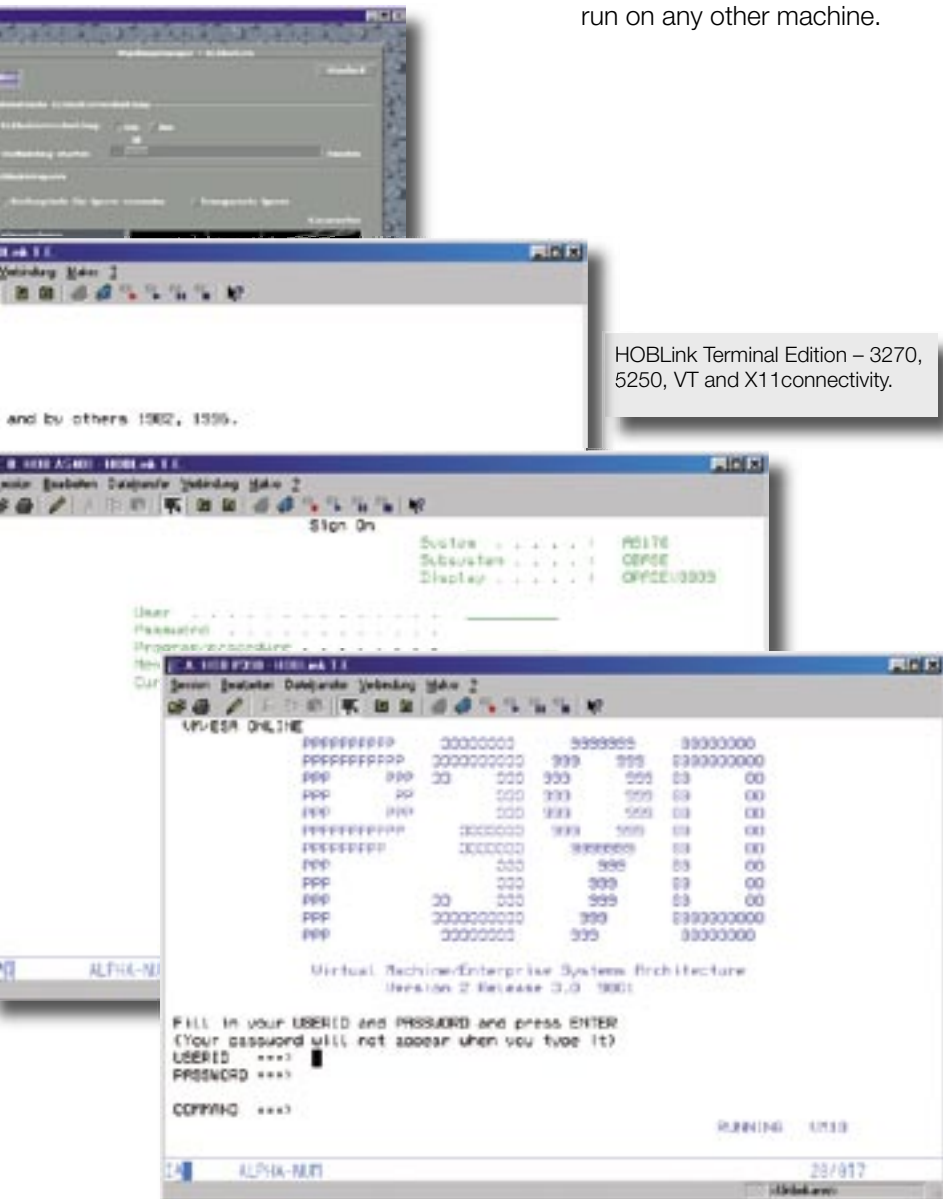
Printing via TCP/IP connections usually requires a gateway. HOBLINK Terminal Edition frees you of this constraint: In combination with HOBCOM (installed on the host), it supports TCP/IP printing, including central print control, without an additional gateway.

## 3270 Connection Types:

- IEEE 802.2 LAN
- COAX DFT / CUT
- X.25/X.25 ISDN D Channel (X.31)
- SDLC / X.25 with Auto-Sync-Modem
- Novell NetWare for SAA
- TN3270 und TN3270E
- LUA
- SDLC
- Demo Host

## 5250 Connection Types

- TN5250 and TN5250E
- over APPC / APPN
  - TCP/IP (Anynet)
  - LAN
  - X.25
  - X.25 ISDN D Channel (X.31)
  - SDLC
- Demo Host
- Compatible to Office Vision



- Supports 3477FC terminals
- Supports 132-column mode

### VT Connection Types

- Telnet
- Direct (serial, COM1 to COM4)
- Modem
- Supports 132-column mode

### Host Session:

- Up to 256 sessions simultaneously, definable as either screen or printer sessions

### HOBLink X11

- X Server package with SSH encryption, incl. FTP, LPR, LPD, Ping software

### User-Friendly Features:

- User-defined keyboard and mouse buttons
- User-defined key pads
- User-defined 3D Hot Spots
- User-defined toolbar/buttons
- Administration Tools for system administrators
- Quick-Control
- Context-sensitive help functionality

### File Transfer:

- Drag & Drop file transfer with Windows Explorer
- With templates
- Files can be transferred in both directions
- Default / user-defined conversion tables for ASCII/EBCDIC
- Host and PC file search function
- Office Vision export/import of documents
- Structured Field and Buffered Mode file transfer
- File transfer compression

### Printing:

- Default / user-defined conversion tables
- Printing via Windows standard printer drivers
- Printing via editable escape sequences: bypass character, passthrough character
- Local hardcopy printing: in color, with page margins and print

preview, black / white conversion printing

- Can print GDDM graphics
- Printing via TCP/IP without a gateway (with HOB COM on the host)
- Improved printer status messages (clear text)

### Compatibility:

- Data exchange with MS Office via DDE, OLE 2.0/COM 1 (best with HOBLink FaceLifter)
- Can be installed on Windows Terminal Server
- Supports LDAP v3
- Supports RACF
- Multi-EHLLAPI — simultaneous communication with several EHLLAPI applications
- Office Vision
- GDDM graphics
- Supports Novell NDS
- Supports MS Active Directory Services

### Additional Benefits:

- EHLLAPI-DOS PassThrough function
- APPC and CPI-C interfaces

### Integrated Macro Language:

- Menu-controlled, uncomplicated macro programming for the user

### System Requirements:

- PC with Pentium processor
- 16 MB main memory
- Windows 32-bit operating system



HOB GmbH & Co. KG  
Schwadmuehlstr. 3  
90556 Cadolzburg

Phone +49 9103 715 0  
Telefax +49 9103 715 271  
E-mail [marketing@hobsoft.com](mailto:marketing@hobsoft.com)  
[support@hobsoft.com](mailto:support@hobsoft.com)  
Phone hotline +49 9103 715 161  
Fax hotline +49 9103 715 299

Branch offices abroad  
Eindhoven, Malta, New York, Paris, Vienna

Visit us at our World Wide Web site:  
<http://www.hobsoft.com>

Information in this document is subject to change without notice. HOB is not liable for any omissions or errors which may be contained in this document. Product information contained herein is from November 2007. Any trademarks in this document are the property of their owners.

