



HOB GmbH & Co. KG
Schwadmühlstr. 3
90556 Cadolzburg

Tel: 09103 / 715-0
Fax: 09103 / 715-271
E-Mail: support@hobsoft.com
Internet: www.hobsoft.com

WhitePaper

Rich Client Platform with
HOBLink J-Term Eclipse Plug-in
Integration of HOBLink J-Term into the
Eclipse Framework

August 2007



Rich Client Platform with HOBLink J-Term Eclipse Plug-in

The most common workstations are either thin or fat clients. However, there is a third option: rich clients.

Thin clients are lean PCs with a low power consumption and, usually, without moving parts, such as ventilators or hard drives. Hardware requirements for a thin client are minimal; needing only to display a server desktop or remote applications, as well as having the local input devices such as keyboard and mouse. The remote applications run on a server, therefore the CPU load is mostly generated there. The operating systems for thin clients are usually Microsoft Windows Terminal Server or a third-party solution.

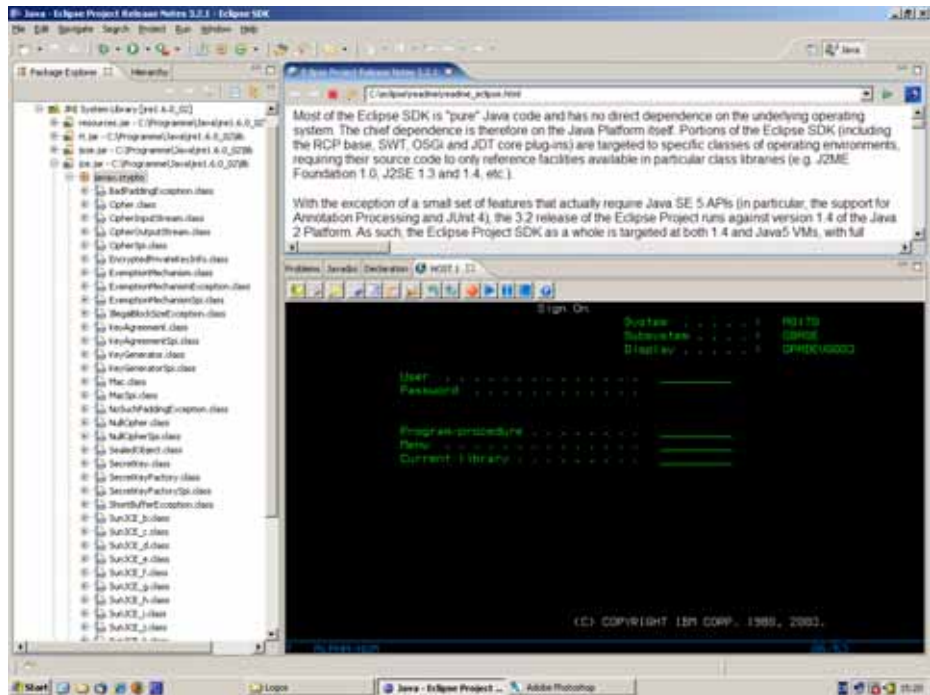
A standard PC is referred to as a fat client. These are not at issue here.

Whereas a thin client is commonly restricted to the display of a remote desktop or a remote application, a rich client has the additional ability to process, evaluate and, for example, graphically condition data.

Usually several applications on a rich client are bundled within one application framework. The communication data output by a rich client do not have to follow a predefined protocol and can also be exchanged with several terminals.

Another characteristic advantage of a rich client is that data can be further processed offline. It is only necessary to go back online to run a data collation. This is a major difference to thin clients, as these devices must remain online to be used at all.

Eclipse resulted out of the IBM product Visual Age for Java, which IBM transferred to the Open Source community in 2001. Originally designed as a pure Java development environment, Eclipse, with the corresponding plug-ins, also supports other programming languages. Eclipse itself, as well as the plug-ins used, is implemented in Java. As of version 3, Eclipse is so modularly constructed, that the Eclipse-core can only provided the required functionality when it is equipped with the appropriate plug-ins. This high modularity defines the above-mentioned rich client platform. For Eclipse-based rich clients a standard PC is the recommended hardware.



Eclipse with the HOBLink J-Term Eclipse plug-in



The HOBLink J-Term terminal emulation is available as an Eclipse plug-in. Via the integration into the Eclipse framework it is very easy for the user to optically design his workstation in accordance with targeted specifications. The used plug-ins can also communicate with each other, e.g., they can control and query data among each other. HOBLink J-Term can thus be remote controlled and serve other plug-ins as a communications layer to the server. Currently, the HOBLink J-Term Eclipse plug-in supports the following communications protocols: 3270, 5250, VT, 9750, 97801 und HP700

Read more about HOBLink J-Term functionalities at:
<http://www.hob.de/produkte/connect/jterm.jsp>

© HOB GmbH & Co. KG August 2007