



HOB GmbH & Co. KG  
Schwadmühlstr. 3  
90556 Cadolzburg

Tel: +49 9103 / 715-0  
Fax: +49 9103 / 715-271  
E-Mail:  
[support@hobsoft.com](mailto:support@hobsoft.com)  
Internet: [www.hobsoft.com](http://www.hobsoft.com)

# WhitePaper

## HOB WebSecureProxy Universal Client

April 2006



# HOB WebSecureProxy Universal Client

The HOB WebSecureProxy Universal Client (HOB WSP UC) is a gateway that can be used to SSL-encrypt TCP-based connection protocols being sent from the client side. Together with the HOB WebSecureProxy, this enables locally installed applications, which themselves are not SSL-capable, to securely exchange data over the Internet. With only one IP port open in the firewall, many applications can communicate over the HOB WSP UC.



## HOB WSP Universal Client *SSL-tunneling for local client queries*

The HOB WSP UC can be downloaded as an applet to your client machine via a Web browser or, if you prefer, locally installed. The only prerequisite on the client side is that it have a Java Virtual Machine (Sun J2SE or CrEme, [www.nsicom.com](http://www.nsicom.com)) installed. Administrator rights are not needed on the client machine. The client listens for TCP queries at the IP port(s) defined in the configuration. These can come from client applications, for example, a locally installed MS Outlook. If MS Outlook queries for e-mails, then the local computer – local host – must be set in the Outlook configuration as the mail server. The connection used for POP3 mailboxes, usually over IP port

110, is taken over by the HOB WSP UC, SSL-encrypted and forwarded over the HOB WebSecureProxy to the terminal set in the configuration.

When using a local e-mail application together with the HOB WSP Universal Client, the e-mail tuner, integrated into the HOB WebSecureProxy, compresses the data to be transmitted. This results in an increase of transmission speed (especially important for mobile devices), as well as a cost reduction if you have a volume rate with your service provider.

If desired, for the HOB WSP UC you can configure several connections with any IP port. Access to the HOB WSP UC can be limited to applications executed locally on the client, or to applications in the local client network. The connection of the HOB WSP UC to the corresponding network adapter determines the IP address. Please see below an example of an HOB WSP UC configuration:

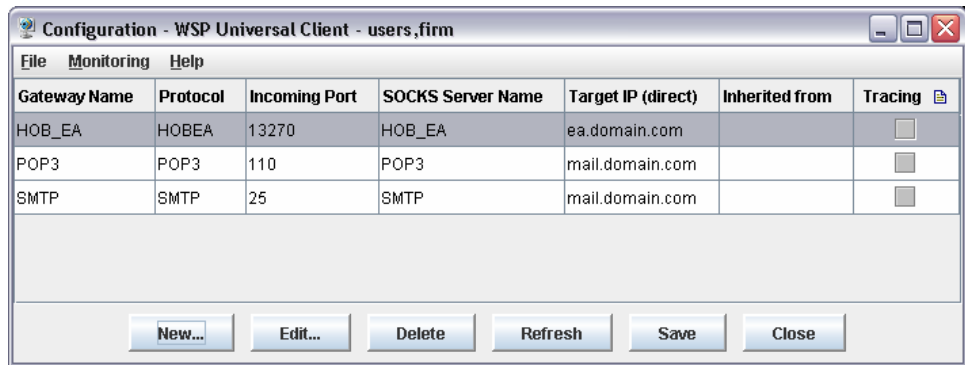
Gateway name (connection name)

“Listening” port on the client

Service attribute for the HOB WebSecureProxy

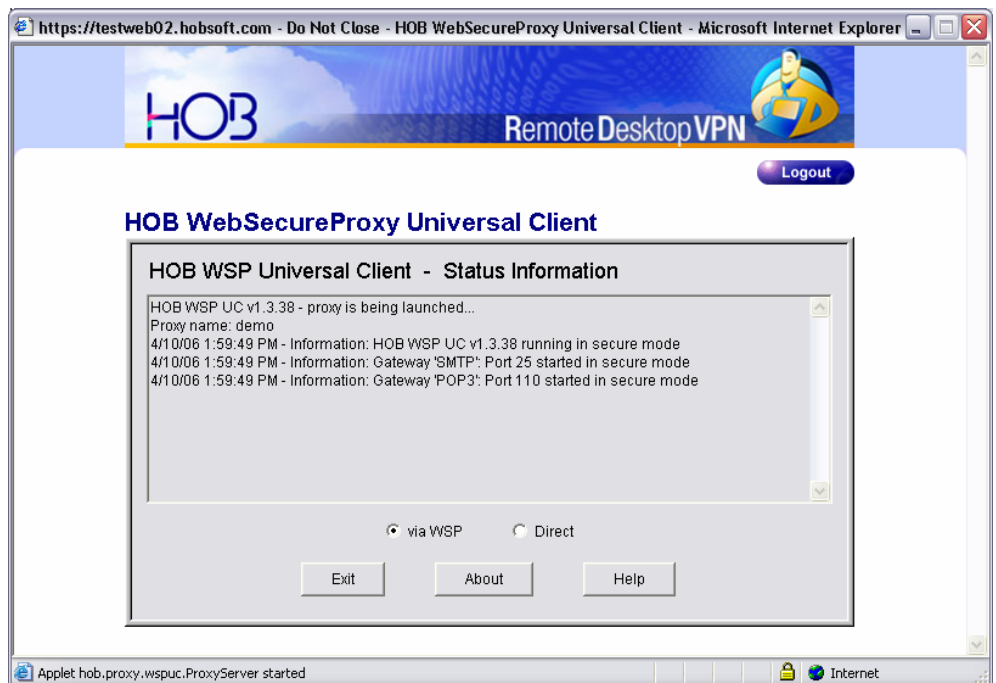
Destination address for direct connections without using the HOB WebSecureProxy, and without SSL in the corporate network

3



List of listening ports in the configuration

When the HOB WSP UC is downloaded via a Web browser, the browser window will show the following status message:



Status display in browser window

If the user wants to merge data over the Internet, the connection should be made over the HOB WSP. As long as the user is within the corporate network, the setting “Direct” should be selected. The HOB WSP UC then passes this data directly to the target system set in the configuration, no compression or encryption will take place.

When using local RDP clients

When you are deploying local RDP clients, HOB Load Balancing can be used for accessing Windows Terminal Server farms, and HOB Desktop-on-Demand can be used to access a Windows desktop running Windows XP Pro.

HOB WSP Universal Client as SOCKS 5 proxy  
*Access to internal company Web services*

If your employees or colleagues want to access company internal Web servers over the Internet, they can do so over the HOB WSP Universal Client and the HOB WebSecureProxy. All that has to be done is to configure the HOB WSP Universal Client as a SOCKS 5 proxy in the user's Web browser. All of the user's Web communications will be SSL-encrypted from the client machine all the way to the HOB WebSecureProxy. Depending on the destination address in the Web browser, either company-internal Web servers or an external Web server of your choice will be addressed over the company firewall. The last mentioned scenario has the added advantage that all Web access provided to remote workers will have to pass through the company firewall.

© HOB GmbH & Co. KG April 2006